



Naracoorte High School

Year 11/12

Course Handbook



Community connections, individual growth & innovative thinking



Learning Ambitions

We inspire proud resilient citizens that are empowered through a safe and supportive learning environment.

We value community, individual growth and innovative thinking.

Naracoorte High School

Stewart Terrace, Naracoorte, South Australia 5271
P: 08 8762 1333 E: dl.0786.info@schools.sa.edu.au

www.narahs.sa.edu.au  



INCLUSIVE EDUCATION	4
UNIVERSITY AND TAFE	7
GETTING YOUR SACE & MODIFIED SACE	8
FLEXIBLE PATHWAYS	10
STAGE 1 SUBJECT REFERENCE	11
Agriculture.....	12
Community Studies.....	13
Cultural Studies	14
Design & Technology	15
English.....	18
Outdoor Education.....	19
Physical Education	20
Humanities & Social Sciences (HASS).....	21
Mathematics.....	24
Sciences.....	27
Tourism.....	29
The Arts.....	30
Integrated Learning.....	35
Flexible Industry Pathways.....	38
Workplace Practices.....	39
Activating Identities & Futures.....	40
STAGE 2 SUBJECT REFERENCE	43
Agriculture.....	44
Community Studies.....	45
Design & Technology	46
English.....	49
Outdoor Education.....	52
Physical Education	53
Humanities & Social Sciences (HASS).....	54
Integrated Learning.....	55
Mathematics.....	56
Sciences.....	60
The Arts.....	62

At Naracoorte High School we offer a large range of Interventions ranging from Tier 1 – Tier 3 to support students learning journeys.

TIER 1 Intervention – Describes quality differentiated learning practice (QDTP) which considers the learning needs of all the children in the classroom. This includes differentiated work and creating an inclusive learning environment. **Inclusive quality first teaching for all.**

TIER 2 Intervention – The extra programs and strategies provided to student who require supports in addition to QDTP. The purpose of Tier 2 intervention is to build on the skills not yet mastered through QDTP and reduce the risk of academic or behavioural problems. **Additional interventions to enable children to work at age-related expectations or above.** Tier 2 interventions are evidence based, time bound programs, focussing on targeted skill build.

TIER 3 Intervention – More intensive, individualized support to amplify the work undertaken in Tier 1 or Tier 2 interventions. Tier 3 interventions are evidence based and time bound, working on targeted skill build. **Additional highly personalised interventions.**

Functional Literacy classroom is a space where students are provided opportunities to practice and develop skills within an environment where the content is designed to suit their individual learning requirements. Each student's diverse experiences, and interests, are taken into consideration when designing and implementing the curriculum.

Within this learning space, students are provided with the opportunity to participate within interest-based, functional activities which develop their literacy skills. To achieve this, students have been provided choice on topics they wish to investigate, within areas that highlight their strengths and provide them confidence to address misunderstandings. Students have been provided structure on how to achieve their individual learning goals, which have been created with each student. This program is designed to help students understand the requirements of the 'real world' and practise these skills independently before they transition out of school into future environments.

Functional Numeracy classroom is a space where students are provided opportunities to practice and develop skills within an environment where the content is designed to suit their individual learning requirements. Each student's diverse experiences, and interests, are taken into consideration when designing and implementing the curriculum.

Within this learning space, students are provided with the opportunity to participate within interest-based, functional activities which develop their numeracy skills. To achieve this, students have been provided choice on topics they wish to investigate, within areas that highlight their strengths and provide them confidence to address misunderstandings. Students have been provided structure on how to achieve their individual learning goals, which have been created with each student. This program is designed to help students understand the requirements of the 'real world' and practise these skills independently before they transition out of school into future environments.

EALD English is a space where students are provided opportunities to practice and develop skills within an environment where the content is designed to suit their individual learning requirements. Each student's diverse experiences, and interests, are taken into consideration when designing and implementing the curriculum.

The development of literacy skills is important for all people to learn to be independent young people living within the wider community. The big 6 Literacy skills will be developed throughout the year, these include: Oral Language, Phonological Awareness, Letter-Sound Knowledge, Vocabulary, Comprehension and Fluency. These important skills will be implemented in situations which are relevant and appropriate to individual students, to ensure they have multiple opportunities to practise and master these skills.

Interoception – The perception of sensations inside the body and includes the perception of physical sensations related to internal organ function such as heartbeat, respiration, safety as well as the automatic nervous system activity related to emotions. Interoception: is a lesser-known sense that helps you understand and feel what's going on inside your body. Kids who struggle with the interoceptive sense may have trouble knowing when they feel hungry, full, hot, cold, or thirsty. Having trouble with this sense can also make self-regulation a challenge.

Macqlit is an explicit and systematic reading intervention program for small groups or older lower progress readers.

What's the Buzz for Teenagers? The aim is for your child to participate with a small group that offers warmth, explicit teaching and opportunities to connect to other students. What's the Buzz with Teenagers? A universal social and emotional literacy resource covers the following topics;

1. The ins and outs of friendship
2. What is a friend?
3. Switching on positivity
4. Wellbeing and social media
5. Empathy
6. Resilience
7. Dealing with Disappointment (loss & grief)
8. Handling anxiety
9. Responding to dominating behaviours
10. Being hurt, trolled or abused online

SHine for those with a Disability – SHine is an important sexual health and positive relationship course offered throughout HPE in our mainstream curriculum offerings. On top of this Naracoorte High School also offer SHine for those with an Intellectual disability by a fully trained professional in the area.

Drumbeat – Stands for discovering relationships using music, beliefs, emotions, attitudes, and thoughts. A music program focussing on exploring healthy, supportive relationships, emphasising teamwork and cooperation.

Guided Reading intervention – an instructional practice or approach where teachers support a small group of students to read a text independently.

Differentiation – Differentiated teaching occurs when a teacher plans a lesson that adjusts either the content being discussed, the process used to learn, or the product expected from students to ensure that learners at different starting points can receive they need to grow and succeed.

PAT M – PAT Maths – Progressive achievement test in Mathematics year 1 -10 developed by ACER. Designed to provide complete information to teachers about the level of achievement attained by students.

PAT R – PAT Reading comprehension and word knowledge the reading comprehension tests consists of four forms of varying difficulty that covers year 3 – 9.

FIP – Flexible Industry Pathway – Included Certificate Course, Contextualised SACE (Workplace Practices) and Industry Immersions. Must be in Year 11 to undertake a FIP and must be on register of providers to access. There are over 15 different Industry areas that can be pursued through a FIP at Naracoorte High School.

ASBA or SBAT – Australian School Based Apprenticeship/ School Based Apprenticeship or traineeship – Must involve a paid employment for minimum of seven and a half hours a week. Must be in years 10,11 or 12. Must be engaged in some educational school subject. Can attend school and work or just use part time after school jobs. A certificate 3 counts as Year 12 in everything except Retail. A certificate 2 counts as Year 11 credits. A completed Certificate 3 can be use as 1 year 12 subjects towards an ATAR. A Certificate 3 can be used to obtain all a student's year 12 other than Research Project if they only want SACE and no ATAR.

Mentor Program for Year 12 Students. All year 12 students at Naracoorte High School are allocated a Mentor that works with them as they face any challenges throughout Year 12, helping them to transition successfully to the next phase of their lives.

Headspace is an outside agency that accesses our school weekly providing both a drop in service and a Case Management Model to support our young people with anything mental health related.

After School Support – Thursday afternoon between 3.30pm and 4.30pm students are able to access free tutoring from staff in the school library. A great opportunity to catch up on Homework tasks or clarification about learning within the classroom setting.

Other Interventions – Drama Club (Monday Lunchtime), Page Turners (bookclub) – Meet twice a Term.

On Ya Bike and ATM (All things Mechanical) – This program provides hands on life skills with a focus on rebuilding bicycles and fixing engines with the intent of providing opportunities to develop life and employability skills.

Lifeskills 101 – This is a targeted intervention program for those with Disabilities. It combines general LifeSkills with Shine principal's and healthy relationships.

Tumbelin – Adventure therapy intervention delivered by Baptist Care and supported by SSO's. Focusing on healthy lifestyles and positive decision making.

Be You Be Proud – A 4 week intensive Tier 2 intervention that culminates in a camp at Noorla Yo-Long. Focusing on positive self esteem.

Steadfast – A 4 week intensive Tier 2 intervention that culminates in a camp at Noorla Yo-Long. Focusing on healthy decision making.

When selecting your Stage 1 and 2 subjects it is important to consider all possible future pathways, based on your current level of performance, as well as your aspirations and capabilities.

You should seek as much advice and information as possible to ensure you select the best learning program possible.

In thinking about your future pathways, don't limit yourself, but instead keep your options open as your aspirations may change at different times in your final years of schooling.

Universities and TAFE impose their own selection criteria for selection purposes. Be sure to access up to date information regarding further study options. Attend Open Days and information sessions provide by Universities and other Institutions.

Seek information from a variety of sources including subject teachers and Year Level Coordinators. The more information you have, the more informed your choices and the greater chance you will have of achieving personal success.

The South Australian Certificate of Education (SACE) is an internationally-recognised secondary school qualification designed to equip you with the skills, knowledge and personal capabilities to successfully participate in our fast-paced global society.

To achieve your SACE, you need to achieve 200 credits.

The compulsory subjects make up 50 credits:

- 10 credits for the Exploring Identities & Futures (EIF) at Stage 1
- 20 credits chosen from a range of English subjects at Stage 1 or Stage 2 (literacy requirement)
- 10 credits chosen from a range of Mathematics subjects at Stage 1 or Stage 2 (numeracy requirement)
- 10 credits for Activating Identities & Futures (AIF) at Stage 2

You will also need to successfully complete at least 60 credits from Stage 2 subjects. These are your elective subjects, but they must combine to be worth at least 60 credits in total.

The remaining 90 credits can be attained through Stage 1 or Stage 2 subjects or SACE Board recognised courses (such as VET or Community Learning).

To gain your SACE, you need to achieve:

- a C grade or better in the compulsory Stage 1 subjects
- a C grade or better in the compulsory 70 credits of Stage 2 subjects, including 10 credits for the AIF.

Generally at Year 11 and Year 12 for each of your semester subjects you receive 10 credits for each semester length subject and 20 credits for each full-year subject.

Here at Naracoorte High School we aim to meet the learning needs of all students.

To meet the learning needs of individual students with significant impairment in intellectual functioning and/or adaptive behaviours associated with their disability, the SACE Board makes available a set of modified subjects.

Modified subjects are highly individualised subjects in which curriculum and assessment are designed around development of one or more SACE capabilities and personal learning goals that are appropriate for the student.

MODIFIED SUBJECTS AVAILABLE AT STAGE 1 AND STAGE 2

- Business Innovation: Modified
- Creative Arts: Modified
- Cross-disciplinary Studies: Modified
- English: Modified
- Design, Technology and Engineering: Modified
- Health and Wellbeing: Modified
- Language and Culture: Modified
- Mathematics: Modified
- Physical Education: Modified
- Scientific Studies: Modified
- Society and Culture: Modified
- The Personal Learning Plan: Modified
- The Research Project: Modified

ACEDS Program

ACEDS is a program for students on Modified SACE looking to transition into the workforce. It comprises of 2 x 20 credits of Modified SACE and is run over 1 full year.

ACEDS is named due to the capability development of students throughout the course.

A – Active learning

C – Critical and Creative Thinking

E – Emotional intelligence

D – Digital Literacy

S – Self Management

Students complete six assessment tasks around Business Innovation and six around Career Development including:

- Employability Skills & Career Exploration
- Resume, Cover Letter & Job Applications
- Micro Business Planning
- Reflection Journals

They are also involved in many hosted Industry Tours and Work Experience.

School Based Apprenticeships (SBA)

Naracoorte High School supports students undertaking a range of school based apprenticeships or traineeships. A school based apprenticeship or traineeship allows students to attend school while working as an apprentice or trainee.

As a school based apprentice or trainee, students have an employer who will employ and train them on the job, while continuing with formal off-job training through a training provider.

Enrolling in a school based apprenticeship or traineeship has a number of benefits including:

- your training will contribute towards your SACE (or equivalent)
- you will start your chosen career or trade while you are at school
- you will earn money while you learn
- you will get experience in the trade or vocation of your choice
- your school based training will convert to full time or part time when you leave school

Students usually attend school part of the week, go to work on some days and attend a training provider on others. We provide flexibility within our timetable for students undertaking school based apprenticeships.

Vocational Education and Training (VET)

Naracoorte High School offers Vocational Education and Training (VET) which enables students to acquire skills and knowledge for work. We work in partnership with registered training organisations to offer a range of Certificate II and III courses at school.

Students at Naracoorte High School have the opportunity to access VET offerings at a range of schools within the Limestone Coast, through the TAFE SA campus in Mount Gambier and from 2026 at the Limestone Coast Technical College.

Naracoorte High School supports students through identifying a range of pathways post school. Students accessing VET at school are equipped with skills that meet the needs of the future workforce while gaining SACE recognition.

SUBJECT REFERENCE

AGRICULTURE

Agriculture	12
-------------------	----

COMMUNITY STUDIES

Communication & the Community	13
-------------------------------------	----

CULTURAL STUDIES

French	14
--------------	----

DESIGN AND TECHNOLOGY

Food & Hospitality	15
Industry & Entrepreneurial Design Solutions – Metal	16
Material Solutions – Woodwork	17

ENGLISH

English	18
Essential English	18

OUTDOOR EDUCATION

Outdoor Education	19
-------------------------	----

PHYSICAL EDUCATION

Physical Education	20
--------------------------	----

HUMANITIES & SOCIAL SCIENCES (HASS)

Ancient Studies	21
Society & Culture	21
Geography	22
Modern History	23

MATHEMATICS

Essential Mathematics	24
General Mathematics	25
Mathematics	26
Specialist Mathematics	26

SCIENCES

Biology	27
Chemistry	27
Physics	28
Psychology	28

TOURISM

Tourism	29
---------------	----

THE ARTS

Creative Arts	30
Drama A	31
Drama B	32
Information Processing & Publishing (IPP)	33
Visual Arts	34

INTEGRATED LEARNING

Integrated Learning Sport Studies	35
Snow Adventures	36
Cambodia	37

FLEXIBLE INDUSTRY PATHWAYS (FIP) 38

WORK PLACE PRACTICES 39

ACTIVATING IDENTITIES & FUTURES 40

AGRICULTURE

Duration of course: 1 Semester – 10 SACE Credits or Full Year – 20 Credits

Recommended Understandings and Experiences: Successful completion of Year 10 Agriculture is recommended but not required.

Course Overview:

You will explore the changes in agricultural practices over time by analysing the different methods of agricultural production in relation to benefits, risks, and opportunities. You will deepen your understanding of sustainable management of the physical and biological environments and of how agriculture impacts on your lives, your communities, and the environment. You will be involved in the management of the enterprises on the school farm including sheep health and welfare, steer selection and nutrition, crop rotation and management, and running a lamb feedlot.

You will also have the opportunity to attend a Careers Trip in Term 2 which will include a 3 day excursion to explore and network with local agricultural businesses and universities.

Big Ideas: Making connections between Science and Agriculture with an industry focus.

Key Questions:

- What is the purpose of estimated breeding values in sheep and cattle production and how can they be used to achieve breeding objectives?
- How are crop trials used and how can they be implemented effectively?
- What role does technology play in improving agricultural production and what is the impact on social, cultural and ethical concerns?
- What is the impact of worms to the Australian sheep industry and how can they be managed on property?
- How are pests and diseases managed in a sustainable way?

School Assessment: **Assessment Type 1:** Agricultural Reports
 Assessment Type 2: Applications



COMMUNICATION & COMMUNITY

Duration of course: 1 Semester (Semester 1 only) – Available to 2025 Year 10 and Year 11 students – 10 SACE Credits

Area of Study: Communication and the Community – “You’re the Voice”

Course Overview:

Self-directed activities in this area of study are likely to involve using language to communicate. Examples of potential activities are:

- Preparing a public presentation / being involved in a public speaking presentation
- Creating/writing articles for a school/community publication
- Writing and/or publishing poetry or a book
- Interviewing people in the community about experiences
- Getting involved in local council/politics
- Creating a website

Big Ideas: Promoting self-confidence/leadership/creativity and/or public speaking skills

Key Questions:

- What issues are important in society today?
- How can I get my voice heard?
- What tools are needed to be a truly active participant in my community?

School Assessment:	Assessment Type 1:	Contract of Work (Development of Contract, Folio, Community Activity)
	Assessment Type 2:	Reflection



FRENCH (BEGINNERS)

Duration of course: Full year (10 SACE Credits) or 2 Semesters (20 SACE Credits)

Course Overview:

Imaginez ! You are out-and-about in Paris, exploring **La Tour d'Eiffel et Le Louvre**. You step into a **un petit café** for a spot of **déjeuner... Faites-attention !** All the servers speak French! **Oh là là ! Qu'est-ce que tu fais ?**

In Stage 1 French Beginners you will build conversational and written skills to discuss your own life and life in France. You will learn how to order food, ask for items and even buy a train ticket to travel to new places. You will enhance your vocabulary through songs, films and comics, exploring what it means to be a global citizen. Together, we will investigate French culture, food, school and activities, to draw comparisons between our own cultures and France and to gain a deeper understanding of how French people live.

Big Ideas: How can language help build our own identity.

Key Questions:

- How can I communicate my wants and needs in French?
- What are the fundamental features of French language?
- In what ways do French people live differently to us?

School Assessment:

Assessment Type 1:	Interaction
Assessment Type 2:	Text Production
Assessment Type 3:	Text Analysis

FOOD & HOSPITALITY

Duration of course: 1 Semester – 10 SACE Credits or Full year – 20 SACE Credits

Course Overview:

This course offers a comprehensive introduction to the dynamic Food and Hospitality Industry, providing flexibility for students with a keen interest in this field. Students will have the opportunity to create and design practical projects within specified criteria, emphasizing contemporary industry trends. The course fosters both independent and collaborative work to help students achieve their culinary objectives. Participants will acquire essential skills in food preparation, storage, and handling, adhering to current health and safety legislation. Additionally, the course includes an investigation of contemporary food and hospitality issues, focusing on current management practices. This holistic approach will provide students with a foundation of knowledge and skills for Stage 2 Food and Hospitality.

Big Ideas: Food to survive and conquer

Key Questions:

- What life skills are required to survive?
- How do we prepare food for targeted audiences?
- Investigating food in the world around us

School Assessment:

Assessment Type 1:	Practical
Assessment Type 2:	Group Activity
Assessment Type 3:	Investigation



INDUSTRY & ENTREPRENEURIAL DESIGN SOLUTIONS – METAL

Duration of course: 1 Semester – 10 SACE credits or Full year – 20 SACE credits

Recommended Understandings and Experiences: Desirable that you have achieved satisfactory completion of Year 9 or 10 Design and Technologies or understand skills and requirements of Design and Technology. Highly recommended to complete a semester of Stage 1 Design and Technology for the Stage 2 course.

Course Overview:

Stage 1 Metalwork gives you the opportunity to design, plan, fabricate and evaluate projects. You will learn how to use metal to fabricate these projects safely and accurately. You will develop your skills in preparation for the planning and fabrication of their Major project. Demonstrated understanding and analysis of the designing, planning and fabrication processes of the project is required.

Big Ideas:

- Metalworking
- Sustainability
- Safety
- Analysis and Design
- Project management

Key Questions:

- How will you:
- Use hand tools, power tools and fixed machinery safely and accurately?
 - Fabricate and work metal to create projects?
 - Prepare and finish metal projects?
 - Understand sustainability and cost of materials associated with project construction?
 - Use Information Communication Technology, Numeracy and Literacy skills in the production of a Design Folio?
 - Understand how to use more than one type of welding?

School Assessment:

Assessment Type 1: Specialised Skills Tasks

Assessment Type 2: Design Process and Product

MATERIAL SOLUTIONS – WOODWORK

Duration of course: 1 Semester – 10 SACE credits or Full year – 20 SACE credits

Recommended Understandings and Experiences: Desirable that you have achieved satisfactory completion of Year 9 or 10 Design and Technologies, or understand skills and requirements of Design and Technology. **Highly recommended to complete a Semester of Stage 1 Design and Technology for the Stage 2 course.**

Course Overview:

Stage 1 Woodwork gives you the opportunity to design, plan, construct and evaluate projects. You will learn how to use timber to construct these projects safely and accurately. You develop your skills further in preparation for planning and construction of your Major Project. Demonstrated understanding and analysis of the designing, planning and construction processes of the project is required.

Big Ideas:

- Woodworking
- Sustainability
- Safety
- Analysis and Design
- Project management

Key Questions:

How will you:

- Use hand tools, power tools and fixed machinery safely and accurately?
- Construct and work timber to create projects?
- Prepare and finish timber projects?
- Understand sustainability and cost of materials associated with project construction?
- Use Information Communication Technology, Numeracy and Literacy skills in the production of a design folio?
- Understand how to use multiple wood working joints?

School Assessment:

Assessment Type 1:

Specialised Skills Tasks

Assessment Type 2:

Design Process and Product

GENERAL ENGLISH

Duration of course: Full year – 20 SACE credits

Course Overview:

In Stage 1 English you will read, respond to and create a range of texts and text types, including novels, film, media, poetry and drama texts. You will be asked to think critically and creatively as you explore the cultural beliefs, attitudes and values of the world of the texts. You will consider the purpose and construction of texts and the impact on the intended audience. Your responses will be in oral and written forms including: essays, speeches, narratives, podcasts, feature articles and TED talks.

Big Ideas: What does looking at texts through an English lens teach us about ourselves and our world?

Key Questions:

- How can deconstructing something improve our understanding of it?
- Why and how do language features and conventions of text construction vary according to the text and its purpose?
- What impact does perspective have on both the author and the intended audience?
- How can I create texts to effectively communicate with those around me?

School Assessment:	Assessment Type 1:	Responding to texts
	Assessment Type 2:	Creating texts
	Assessment Type 3:	Intertextual study

ESSENTIAL ENGLISH

Duration of course: Full year – 20 SACE credits

Course Overview:

In Stage 1 Essential English, you will read, analyse, create and respond to a range of texts including but not limited to films, novels, documentaries, magazines, TV shows, speeches, short stories and poetry for a range of personal, social, cultural, community and/or workplace contexts. Through undertaking this subject, you will be able to understand and interpret information, ideas and perspectives in texts and consider ways in which language choices are used to create meaning. Your responses will be in oral and written forms including essays, speeches, narratives and multi-modal presentations.

Big Ideas: How can my understanding and application of the English language help me to convey my perspective of the world and my place in it?

Key Questions:

- How can I create texts to effectively communicate with those around me?
- How and why does the use of language features and conventions vary according to context, purpose and audience?
- How can creating and constructing texts help us to convey our attitudes, beliefs and/or views with those around us?
- How can analysing texts from authors from a range of backgrounds improve my understanding and engagement with those around me?

School Assessment:	Assessment Type 1:	Responding to texts
	Assessment Type 2:	Creating texts

OUTDOOR EDUCATION A

Duration of course: 1 Semester – 10 SACE credits

Camps may incur a charge.

Course Overview:

Students will prepare, participate and reflect on 2 x 3-day camps. Canoeing and Kayaking at the Glenelg River and Rock Climbing at the world renowned Mount Arapalies. They will also complete a Sustainable Parks Assignment and learn the importance of risk management and correct planning whilst in the outdoors.

Big Ideas: Would you like to explore the great outdoors and assist in protecting our local environment?

Key Questions:

- Can you show proficiency in a range of lightweight adventurous journeys?
- How do you learn, analyse and improve your skills?
- Can you problem solve and stay safe as a group during adventurous activities?
- How can we use lightweight equipment and technology to undertake successful journeys?

School Assessment:

Assessment Type 1: About the Natural Environment – Sustainable Park Assignment, Canoeing booklet, Risk Management Assignment

Assessment Type 2: Experiences in the Natural Environment – Canoe/Kayak Camp– preparation and reflection, Rock climbing Camp– preparation and reflection

OUTDOOR EDUCATION B

Duration of course: 1 Semester – 10 SACE Credits

Camps may incur a charge.

Course Overview:

Students will prepare, participate and reflect on 2 x 3-day camps. Bushwalking in the Grampians and Surfing either at Middleton or Robe. They will also complete a coastal issues study and participate in revegetation work at the Naracoorte Creek.

Big Ideas: Explore the coastal environment and ensure its sustainability into the future.

Key Questions:

- Can you show proficiency in a range of lightweight adventurous journeys?
- How do you learn, analyse and improve your skills?
- Can you problem solve and stay safe as a group during adventurous activities?
- How can we use lightweight equipment and technology to undertake successful journeys?

School Assessment:

Assessment Type 1: About the Natural Environment – Local Coastal Issues Study, Revegetation Project – Naracoorte Creek

Assessment Type 2: Experiences in the Natural Environment – 3-day Bushwalking camp preparation and reflection, 3-day Surf Camp preparation and reflection

PHYSICAL EDUCATION

Duration of course: 1 Semester – 10 SACE credits

Recommended Understandings and Experiences: Year 10 Peak Performance – Specialist Subject
Year 10 Scientific Studies

Prerequisite for Stage 2 Physical Education: At least 1 Semester of either Stage 1 PE or Stage 1 Integrated Learning Sports Studies.

Course Overview:

Stage 1 Physical Education at a SACE level has a strong focus on academics, with participation in sports, theme-based games, laboratories and fitness. The connection of In, Through and About movement is used to explore movement concepts and strategies through these physical activities and promote participation and performance outcomes.

Big Ideas: How can I improve my own and others performance?

Key Questions:

- How do I collate and analyse evidence to show my improved performance?
- What are the barriers to physical activity?
- Do modified games improve equity and participation?

School Assessment:

Assessment Type 1: Performance Improvement

Assessment Type 2: Physical Activity Investigation

You will be assessed on your Application, Communication and Exploration, Analysis and Reflection. You will not receive a grade for your practical performance as per SACE Guidelines. Topics covered are negotiable by your interests.

.....

ANCIENT STUDIES

Duration of course: 1 Semester – 10 SACE credits

Recommended Understandings and Experiences: Satisfactory level of Year 10 HASS skills.

Course Overview:

In Stage 1 Ancient Studies you will learn about the history, literature and culture of civilisations from ancient Asia-Australia, Western Africa and Europe. You will become a critical thinker, analysing partial archaeological and written sources to make hypotheses of the past. You will develop inquiry skills allowing you to challenge or confirm beliefs of the Ancient World. Your responses will be in written or oral form including essays, reports, source analysis, constructed archaeological digs and multimodal presentations.

Big Ideas: How can we use primary and secondary evidence to piece together Ancient civilisations?

Key Questions:

- What influence have ideas and innovations from the Ancient world had on modern society?
- How do primary and secondary sources shape our ideas of the Ancient world?
- What was day to day life in the Ancient world like?
- Why do ethical considerations need to be taken onboard when studying Ancient civilisations?

School Assessment:

Assessment Type 1:	Skills and Applications
Assessment Type 2:	Inquiry

SOCIETY & CULTURE

Duration of course: 1 Semester

Recommended Understandings and Experiences: Satisfactory level of Year 10 HASS skills.

Course Overview:

8 billion people. 195 countries. 4000 cultures. Each day our ever-growing world faces new struggles. Australia, a land that celebrates multiculturalism, still faces issues within our societies. Globally, issues of slavery, soldiers, corruption and violence still ravage countries. In this course, you will explore current issues that effect societies and cultures both locally and globally. You will examine topics relevant to today's world including *Islam in Modern Society* and *Ukraine at War*. You will pose solutions and ideas that contribute to social change, challenging the perceptions you know about the world and Australia.

Big Ideas: How do societies and cultures influence each other?

Key Questions:

- How do varying cultures shape and create nations?
- How do different countries react to violations of Human Rights?
- What solutions can we pose to inflict social change?

School Assessment:

Assessment Type 1:	Source Analysis
Assessment Type 2:	Group Activity
Assessment Type 3:	Investigation

GEOGRAPHY

Duration of course: 1 Semester – 10 SACE credits

Recommended Understandings and Experiences: Satisfactory level of Year 10 HASS skills

Course Overview:

In this course you will consider the relationships between people, places and environments. You will be asked to investigate natural issues on a local and global scale. You will use this knowledge to consider a more sustainable way of life and develop an awareness of socio-economic differences and the factors that influence this.

Big Ideas: How do we create a world worth living in for future generations?

Key Questions:

- How have changes in human technology affected our environment?
- Where can we find examples of sustainable futures?
- How have bushfires impacted Australia's public and the environment?
- How do we help rebuild communities and lives after tragedy?

School Assessment:	Assessment Type 1:	Geographical Skills and Applications
	Assessment Type 2:	Fieldwork



MODERN HISTORY

Duration of course: 1 Semester – 10 SACE credits

Recommended Understandings and Experiences: Satisfactory level of Year 10 HASS skills

Course Overview:

In Stage 1 Modern History you will learn how historical ideas, people and events have influenced societies in Australia, America, Europe and Africa. By exploring political ideas and influential people and groups, you will build skills in historical inquiry. You will consider the nature of primary and secondary resources, including whose history they tell and whose stories are not included and why. You will examine different interpretations of history to create historical arguments. Your responses will be in written or oral form including: essays, reports, source analysis, speeches and multimodal presentations.

Big Ideas: Do you wonder how big of an influence history has played in your life?

Key Questions:

- Have social movements created a 'better world'?
- Can people really change the course of history?
- Why are there different interpretations of events?
- How can we learn from mistakes made in the past?

School Assessment:

Assessment Type 1:	Historical Skills
Assessment Type 2:	Historical Study



ESSENTIAL MATHEMATICS

Duration of course: Full year – 20 SACE Credits

Course Overview:

Essential Mathematics is designed for a range of students, including those of you who are seeking to meet the SACE numeracy requirement and those of you who are planning to pursue a career in a range of trades or vocational pathways. There is an emphasis on extending your mathematical skills in ways that apply to practical problem-solving in everyday and workplace contexts, in flexible and resourceful ways.

Those of you who complete 10 credits of this subject with a C grade or better will meet the numeracy requirement of the SACE.

Big Ideas: Extending your mathematical skills in ways that apply to practical problem-solving in everyday and workplace contexts.

Key Questions:

- What financial calculations are required to live independently?
- How do you measure and classify angles to make 2 and 3 dimensional shapes?
- How do you read and critically interpret data?

School Assessment:

Assessment Type 1:

Skills and Applications Tasks

Assessment Type 2:

Investigation Folio



GENERAL MATHEMATICS

Duration of course: Full year – 20 SACE Credits

Recommended Understandings and Experiences: 10 Mathematics or 10A Mathematics

Course Overview:

General Mathematics extends your mathematical skills in ways that apply to practical problem solving. Topics cover a diverse range of applications of Mathematics, including personal financial management, the statistical investigation process, modelling using linear and non-linear functions, networks and matrices and discrete models.

Those of you who complete this subject with a C grade or better will meet the numeracy requirement of the SACE.

Big Ideas: Learning transferrable skills for real life applications.

Key Questions:

- Why do we invest money using financial institutions and the share market?
- How do you use measurement techniques effectively in a range of situations?
- How do you choose which statistical methods to use when investigating data?
- What formulae is effective in calculating sides and angles of triangles in 2 and 3 dimensional shapes?
- How can you model relationships using linear and exponential functions?

School Assessment:	Assessment Type 1:	Skills and Applications Tasks
	Assessment Type 2:	Investigation Folio



MATHEMATICS

Duration of course: Full year – 20 SACE Credits

Recommended Understandings and Experiences: 10A Mathematics

Course Overview:

This subject provides the foundation for further study in Mathematics. Mathematical Methods can lead to tertiary studies of, for example, economics, computer sciences and the sciences. It prepares you for courses and careers that may involve the use of statistics, such as health or social sciences.

Those of you who complete this subject with a C grade or better will meet the numeracy requirement of the SACE.

Big Ideas: The foundation of further studies in mathematics.

Key Questions:

- How is calculus used to develop a deep understanding of the physical world through knowledge of relationships involving rates of change.
- How are statistics used to describe and analyse phenomena that involve uncertainty and variation?

School Assessment:

Assessment Type 1:

Skills and Applications Tasks

Assessment Type 2:

Investigation Folio

SPECIALIST MATHEMATICS

Duration of course: 1 Semester – 10 SACE Credits

Course Overview:

Specialist Mathematics draws on and deepens your mathematical knowledge, skills and understanding. It provides you with the opportunity to develop your skills in using rigorous mathematical arguments, proofs and using mathematical modelling. It includes the study of functions and calculus. Specialist Mathematics can be a pathway to mathematical sciences, engineering and physical sciences. Specialist Mathematics is designed to be studied in conjunction with Stage 1 Mathematics.

Big Ideas: Supplementing Stage 1 Mathematics to further develop mathematical skills.

Key Questions:

- How can you use arguments and proofs to explain mathematical models?

School Assessment:

Assessment Type 1:

Skills and Applications Tasks

Assessment Type 2:

Investigation Folio

BIOLOGY A & B

Duration of course: 1 Semester – 10 SACE Credits (2 semesters available)

Recommended Understandings and Experiences: Year 10 Science – Full year

Course Overview:

Biology will help you discover the organisation of the smallest living unit, the cell and how they form systems in plants and animals. You will research how these systems are affected by infectious diseases and why there are such a diverse range of living things on the planet.

Big Ideas: The study of life and all living things.

Key Questions:

- Why is life on Earth so diverse?
- How do organisms interact with their own and other species and their environments?
- How do diseases become infectious and harmful to global populations?

School Assessment: **Assessment Type 1:** Skills and Applications Tasks
Assessment Type 2: Investigation Folio

CHEMISTRY A & B

Duration of course: 1 Semester – 10 SACE Credits (2 semesters available)

Recommended Understandings and Experiences: Year 10 Science – Full year

Course Overview:

Chemistry is the study of the matter that makes up everything around us. Understanding chemical reactions and the properties of matter is key to understanding the world we live in. Chemistry is often a prerequisite for many Science courses such as Forensics, Animal Science, Agronomy and Geoscience as well as the Health Sciences including medicine. Chemistry also provides pathways in engineering.

You must complete A before B and study this course for the full year to continue in Stage 2.

Big Ideas: Chemistry sits at the intersection of all sciences and is the study of matter, its properties and how/why substances interact.

Key Questions:

- How do atoms make up our world?
- Why is the Periodic Table so beneficial to Chemistry and future applications of Science?
- How can Chemistry be used to solve current and future environmental and economic problems?

School Assessment: **Assessment Type 1:** Skills and Applications Tasks
Assessment Type 2: Investigation Folio

PHYSICS A & B

Duration of course: 1 Semester – 10 SACE Credits (2 semesters available)

Recommended Understandings and Experiences: It is recommended that Stage 1 Physics also study a minimum of General Mathematics.

Course Overview:

Space is cool! It's even cooler when you understand how big and powerful it really is by exploring the physics of forces, energy and movement on and off Earth. Semester 1 also includes nuclear radiation as the most reliable form of energy for space missions further from the Sun, and is currently powering the Mars rover Perseverance.

In Semester 2 students learn about electricity, sound light and heat through building and investigating their own electrical circuits. The first topic introduces the basics of battery-powered DC circuits including the use of multimeters to measure and troubleshoot circuits. This circuit knowledge is then used for the following two topics of waves (sound and light) as well as heat.

You must study this course for the full year to continue in Stage 2.

Big Ideas: Study the very big and the very small in the world around us.

Key Questions:

- How can we use models to describe motion, forces, waves and nuclear activity?
- What is the concept of electric charge and how can you make an electric current with the concepts of potential difference, current, resistance, electric power and efficiency?
- How has physics helped in space exploration?

School Assessment: **Assessment Type 1:** Skills and Applications Tasks
Assessment Type 2: Investigation Folio

PSYCHOLOGY A & B

Duration of course: 1 Semester – 10 SACE Credits (2 semesters available)

Recommended Understandings and Experiences: Nil

Course Overview:

Psychology aims to describe and explain both the universality of human experience and individual and cultural diversity. It also addresses the ways in which behaviour can be changed. It offers a means for making society more cohesive and equitable; that is, psychology offers ways of intervening to advance the well-being of individuals, groups, and societies. However, every change also holds the possibility of harm. The ethics of research and intervention are therefore an integral part of psychology.

Big Ideas:

Using Psychology to construct explanations and evidence for human behaviours and health.

Key Questions:

- How are emotions, amnesia and mental health constructed and portrayed in films?
- How is technology impacting the way people learn?
- What effects does memory have on peoples' outlooks?
- How is neuroimaging informing our understanding of neuro-conditions?

School Assessment: **Assessment Type 1:** Skills and Applications Tasks
Assessment Type 2: Investigation Folio

TOURISM

Duration of course: 1 Semester – 10 SACE Credits

Recommended Understandings and Experiences: Nil

Course Overview:

This course explores four themes of Tourism. These include:

- Understanding the Tourism Industry
- Identifying Visitors and Hosts
- Creating Sustainable Tourism
- Working in the Tourism Industry

Students will explore Tourism in their local area, considering the history of tourism, the varying impacts of it on people, places and environments, the role of governments and organisations and/or Skills required for employment in the Tourism industry.

This course could also contain short excursions to local landmarks including: Naracoorte Caves, Tourism Centre, Caravan Park, Council or Local Parliament Offices.

Big Ideas: How does tourism impact our local communities, economies and environments?

Key Questions:

- What are the economic benefits and challenges of tourism for local communities?
- How does tourism influence cultural exchange and preservation in different regions?
- What environmental impacts does tourism have, and how can they be mitigated?
- How do government policies and global trends shape the tourism industry?

School Assessment:	Assessment Type 1:	Case Study
	Assessment Type 2:	Sources Analysis
	Assessment Type 3:	Practical Activity
	Assessment Type 4:	Investigation



CREATIVE ARTS A & B

Duration of course: 1 Semester – 10 SACE credits
Full year if choosing A & B – 20 SACE credits

Recommended Understandings and Experiences: Successful completion of at least one Semester of Art at Year 10 level.

Course Overview:

Don't just think outside the box, think outside the classroom? Your imagination can run wild in this subject as you can learn skills in painting, drawing, sculpture, photography, jewellery making, craft, textiles, woodwork, metalwork and the list goes on. Basically, if it is creative, you can do it! Stage 1 Creative Arts gives you the opportunity to learn all the stages of thinking creatively, learning unique skills and applying them to real products. Put it all together through the creation of your own product or artwork!

Note: Creative Arts is a flexible subject which allows students to choose their mediums. If you have experience in a chosen area, you have the opportunity to stretch your knowledge further.

Big Ideas: How can I turn my artistic skills and creative ideas into a product.?

Key Questions:

- How can I develop the skills necessary to be successful in the creative arts industries?
- How can I use the design process to plan and create original products?
- How can I develop the skills necessary to create effective creative arts products?
- How can I use the design process to plan and create original works which contribute to my local community?

School Assessment: **Assessment Type 1:** Product
 Assessment Type 2: Folio



DRAMA A

Duration of course: 1 Semester – 10 SACE credits

Recommended Understandings and Experiences: Successful completion of the Year 10 Drama Course is recommended but not required.

Course Overview:

In this course you will be involved in the staging of a production to be presented to a public audience. You will contribute by taking on an onstage role as an actor, or an offstage technical role. You will experience and reflect on the dramatic process that links the theory to the page to stage journey, and critically analyse their role in the group production, along with your growth as an artist. You will investigate the work of a dramatic practitioner/innovator, examples include Antonin Artaud, Bertolt Brecht and Eugene Ionescu, along with a dramatic style through theory sessions and practical workshops. You will be challenged to also create a hypothetical production as a director, designer or actor explaining your reasons for creative decisions and outlining the intended impact on your audience. You will have the opportunity to view live and/or online performances completing an evaluation that demonstrated your knowledge and understanding of production elements and acting.

*Content may vary depending on your prior knowledge, student numbers and the combination of classes

*Please note you will need to be available for after school rehearsals to complete the group production task.

Big Ideas: Exploring the unconscious mind.

Key Questions:

- What is the unconscious mind and how is it explored in The Arts?
- What is surrealism and who contributed to its development in The Arts?
- How can I create theatre that subjects the audience to a new experience?
- How can I work collaboratively with other students in an ensemble to produce an effective theatre production?

School Assessment:	Assessment Type 1:	Performance
	Assessment Type 2:	Responding to Drama
	Assessment Type 3:	Creative Synthesis

DRAMA B

Duration of course: 1 Semester – 10 SACE credits

Recommended Understandings and Experiences: Successful completion of Year 10 and/or Year 11 Semester 1 Drama Course is recommended but not required.

Course Overview:

In this course you will have the opportunity to be self-directed in their exploration of the dramatic process. You participate in creative problem solving as you generate, analyse, and evaluate ideas. You develop personal interpretations of texts or create your own to ignite your imagination and creativity as you continue to build on your own individuality, identity, self-esteem, and confidence. You will work collaboratively to stage a Group Production in an acting or off-stage role either showcasing a collection of monologues, small ensemble performance or a whole group performance. You have the opportunity to view live and/or online performance completing an evaluation that demonstrates your knowledge and understanding of directorial concept, acting and production elements.

* Content may vary depending on your prior knowledge, student numbers and the combination of classes.

* Please note you will need to be available for after school rehearsals to complete the group production task.

Big Ideas: Creating My Own Style

Key Questions:

- How can I further develop my skills, knowledge, creativity, and resilience?
- Can I create an original piece of dramatic work that builds my individual skills and expresses my own ideas and style?
- How do different theatre and performing arts roles contribute to an effective production and which role(s) best suit my individual skills and talents?
- How can I collaboratively work with others in an ensemble to produce an effective theatre production?

School Assessment:	Assessment Type 1:	Performance
	Assessment Type 2:	Responding to Drama
	Assessment Type 3:	Creative Synthesis

INFORMATION PROCESSING & PUBLISHING (IPP)

Duration of course: 1 Semester – 10 SACE credits

Recommended Understandings and Experiences: Successful completion of at least one Semester of Art at Year 10 level.

Course Overview:

Have you ever had a great idea for a logo or business name, but had no idea how to make it? Or are you always thinking of ways the businesses you see could be improved? If your answer is yes, then Stage 1 Information Processing & Publishing (IPP) is for you. With a strong emphasis on using the design process to Design for Purpose, this course provides you with the opportunity to learn the skills, processes and techniques required to design, manipulate and produce products for our school and wider community. So if you want to learn graphic design skills that can be applied to any digital format, or learn what's involved in being a big-time graphic designer, this is the course for you.

Big Ideas: Graphic design is more than meets the eye, its art with a purpose.

Key Questions:

- What are the design principles and how do I use them to make eye catching posters, flyers, business cards and websites?
- How can I use industry-level software to produce, edit and manipulate images and text for use in digital designs?
- What are the key components of a good design? and how do I evaluate the success of my products?
- How is the graphic design industry being affected by social and ethical laws?

School Assessment:

Assessment Type 1:	Practical Skills
Assessment Type 2:	Product and Documentation
Assessment Type 3:	Issues Analysis



VISUAL ARTS – ART A & B

Duration of course: 1 Semester – 10 SACE credits or Semesters – 20 SACE credits

Recommended Understandings and Experiences: Successful completion of at least one Semester of Art at Year 10 level.

Course Overview:

In Stage 1 Visual Arts, you will explore the work of artists from a range of historical and cultural contexts to understand how art can communicate aspects of personal identity and culture. You will understand how artists manipulate materials, techniques and subject matter to create meaningful art works. You will experiment extensively with selected materials, techniques and styles to improve practical skills and create original works of art which reflect your personal visual style and express aspects of your personal identity.

Big Ideas: How can art change the world.

Key Questions:

- How can art communicate aspects of personal identity and culture?
- How do artists use symbolism in works of art to convey meaning?
- How can I develop my knowledge and skills to become a better artist?
- How can I create original works of art that express my individual skills, style and ideas?

School Assessment:	Assessment Type 1:	Folio
	Assessment Type 2:	Practical
	Assessment Type 3:	Visual Study



INTEGRATED LEARNING SPORT STUDIES

Duration of course: 1 Semester – 10 SACE credits (Semester 2 only)

Recommended Understandings and Experiences:

Year 10 Peak Performance – Specialist Subject

Prerequisite for Stage 2 Physical Education:

At least 1 Semester of either Stage 1 PE or Stage 1 Integrated Learning Sports Studies.

Camps may incur a charge.

Course Overview:

This course is designed for you if you have a keen interest in sport, physical activity, coaching and umpiring. In addition, this course prepares you for Stage 2 Physical Education with practical application.

Key Questions:

- Can you show an improvement of skills and understanding in a range of sports, team and individual?
- What communication and collaboration strategies can I use to ensure the success of my team?
- What physical activity opportunities are available in my community to push out of my comfort zone?
- How can I develop my umpiring or coaching skills?

School Assessment:

Assessment Type 1: Practical Activity

Assessment Type 2: Connections – Group Dynamics

Assessment Type 3: Personal Venture

Topics covered are negotiable by your interests.



INTEGRATED LEARNING – SNOW ADVENTURES

OFFERED BI-ANNUALLY

Duration of course: Semester 2 ONLY – 20 SACE Credits. A minimum of 5 tasks to be completed for 20 SACE Credits. This is a Stage 1 SACE subject that can be offered to students of Year 10 and 11.

Course Fees: Travel to Mount Hotham approx. cost \$1900

Course Overview:

This course provides an opportunity for you to develop a range of personal and group skills in an environment which many students would otherwise not experience.

This course is not just a “trip to the snow” but a range of activities programmed in the lead-up and post snow trip. A learning environment outside school, which is very valuable in motivating you to broaden your education. An unfamiliar environment tests your self-reliance and enables you to develop your Personal and Social Capability, in particular self management. It enables you to focus on your relationship with your peers and teachers.

Practical Exploration:

- Planning Portfolio in preparation for the snow trip. What do I need to know and prepare before going to the Snow. This will include the following topics: Weather, Alpine Environments, Environmental Awareness, Hyperthermia, Hypothermia, Clothing, Equipment, Fatigue, Hydration and Nutrition, Safety, Fitness, Chairlifts/T-bars, Insurance.
- Learning to Ski/Snowboard students will document their skill development in learning to ski/snowboard, and the improvement of their skills, abilities and capabilities.
- Reflect on their journey and provide feedback to their peers in their daily snowsport lessons through a Multimodal Presentation (social media post, speaking at an assembly or present to a Year 9 class to promote Snow Trip 2026).

Connections: They will be part of a team involved in the planning and execution of an evening group activity whilst on the mountain.

Personal Venture: Recreation in an Alpine Environment”. Students will choose a topic of personal interest and research everything there is to know about that topic.

Big Ideas:

Use this fun, challenging and unique environment to develop your personal and social skills. Bringing home new found motivation and enthusiasm back into the classroom and community.

Key Questions:

- Would you like a journey of a lifetime?
- What do I need to know before going to the Snow?
- What skills do I need to learn to ski or board?
- How can I collaborate with my team to execute a group activity?
- How can I share my experience with others?
- What topic of personal interest related to alpine environments am I passionate about?

School Assessment:

Assessment Type 1:	Practical Exploration 60%
Assessment Type 2:	Connections 20%
Assessment Type 3:	Personal Venture 20%

SACE STAGE 2 | INTEGRATED LEARNING – CAMBODIA

OFFERED BI-ANNUALLY

Stage 2 (Year 12 Subject that can be selected in Year 11)

Duration of course: Full year – 20 SACE Credits

Course fee: Travel to Cambodia – approx. \$5,000 pp.
(Subject to minimum numbers required for international travel being met.)

Course Overview:

Head Heart Hand Holiday is a Stage 2 Integrated Learning subject in which you must achieve a C- or better to count towards their SACE. It can also count towards and ATAR.

Have you ever wanted to travel to Cambodia? Are you interested in finding out about a third world country and participating in life saving volunteer work? If you are interested in connecting with another culture, then this subject may be for you. You will explore the requirements to travel to Cambodia in the generation of a Planning Portfolio and then participate in numerous, often out of school hours, fundraising activities to support your travel. You will need to undertake an Investigation around travelling to a Third World Country, Cambodia or Volunteering. A photographic journal is required of the journey as well as participation in a hands on task undertaken in Cambodia that interacts with a local family. As part of this subject you will also explore your own unique gifts you bring to the world and undertake a self-development program of Tribel

Big Ideas: Volunteering in a third world country. Undertaking a personal self-development program.

Key Questions:

- How can I give back to society?
- How to organise large scale fundraising events?
- How can I share my findings with others?
- How can I apply my learning beyond the classroom?
- How can I travel internationally?
- What can I learn about myself?
- Learning about Cambodia.

School Assessment:

Assessment Type 1:	Practical Inquiry (40%) 3 tasks in total
Assessment Type 2:	Connections (30%) 2 tasks in total
Assessment Type 3:	Personal Endeavour (30%) 1 task in total

Students working towards an ATAR can only choose one Integrated Learning subject.

FLEXIBLE INDUSTRY PATHWAYS (FIP)

“Get a head start on your career”

Flexible Industry Pathways (FIP) are a new way of approaching the delivery of Vocational Education and Training (VET) in schools. Flexible Industry Pathways are designed to prepare you for the world of work as well as meeting industry and employer’s needs.

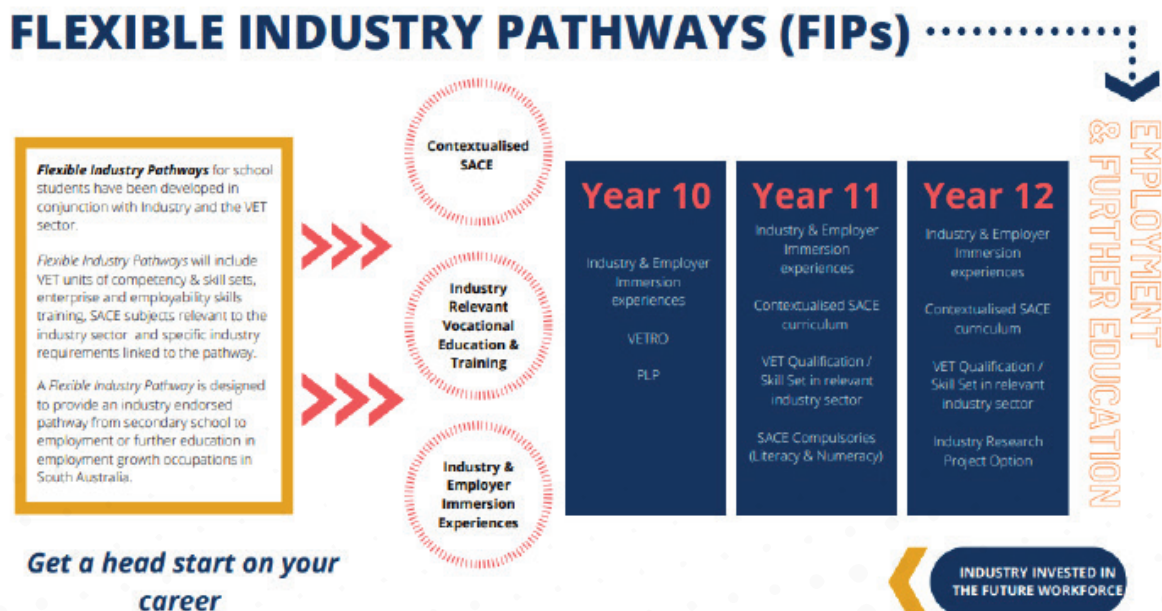
Flexible Industry Pathway programs have been designed in consultation with industry and are aimed at equipping you with the skills, knowledge and qualifications to enter into employment or further study in the industry. Flexible Industry Pathways provide you with a clearly articulated pathway through secondary school to employment, or further education in key growth industries across South Australia.

Depending on the needs of employers, FIPs include VET qualifications at Certificate I, II and III levels that industry considers suitable for school students. They also include employability skills training delivered through SACE curriculum and any specific industry requirements linked to the pathway.

FIPs can include multiple options depending on you, your entry level, overall program of study and the industry requirements. You will undertake competencies from national training packages which have been nominated by industry to support relevancy and access to future employment opportunities as well as contextualised SACE curriculum. You may choose to complete their Research Project as part of the pathway program. You will participate in a range of Industry Immersion experiences and hands on learning opportunities.

You will be supported to identify an appropriate Flexible Industry Pathway suited to your interests and strengths through quality career education and industry and employer immersion opportunities. Specific schools within the Limestone Coast will be identified as HOST Schools, enabling you greater access to a variety of opportunities.

As part of a FIP, students also obtain 20 Stage 1 credits of SACE in Work Place Practices.



WORK PLACE PRACTICES

Duration of course: 2 Semesters – 20 SACE Credits

Recommended Understandings and Experiences: An interest in the world of work and students should be either undertaking a VET course, have paid employment or be prepared to undertake 50-60 hours of work experience.

Course Overview:

Are you ready and eager to enter the workforce? This course will support you in becoming work ready through developing the required skills and knowledge of industry and work related issues. You will explore topics including Occupational Health and Safety, Bullying and Harassment, Technology in the Workforce, Educational and Training Requirements, Workers Rights and Responsibility and Employability Skills. You will have the opportunity to write a cover letter, resume and practice responding to potential interview questions for a position/job you they would like to apply for. To successfully complete the course you will need to undertake 60 hours in a performance activity, which can include Work Experience, paid work or a VET course. You will undertake an Investigation either as a practical or an issue analysis, which will involve the collection and interpretation of a range of primary and secondary sources. Reflection is also a key focus, therefore, you will need to be able to reflect on your learning experiences and how they can help you in your future work or career pathway.

Big Ideas: Become Work Ready

Key Questions:

- What industry and work related challenges will you face when entering the workforce?
- How will technology impact the workplace in the future?
- How can I develop skills to make me employable.

School Assessment:	Assessment Type 1:	Folio
	Assessment Type 2:	Performance
	Assessment Type 3:	Reflection

Students enrolled at the Limestone Coast Technical College will undertake Work Place Practices as part of their Trade training requirements.

SACE STAGE 2 | ACTIVATING IDENTITIES & FUTURES (AIF)

Duration of course: Full Year – 10 SACE Credits. AIF has now replaced Research Project and remains a compulsory Stage 2 subject studied in Year 11. You must achieve a C- or better to achieve your SACE.

Course Overview:

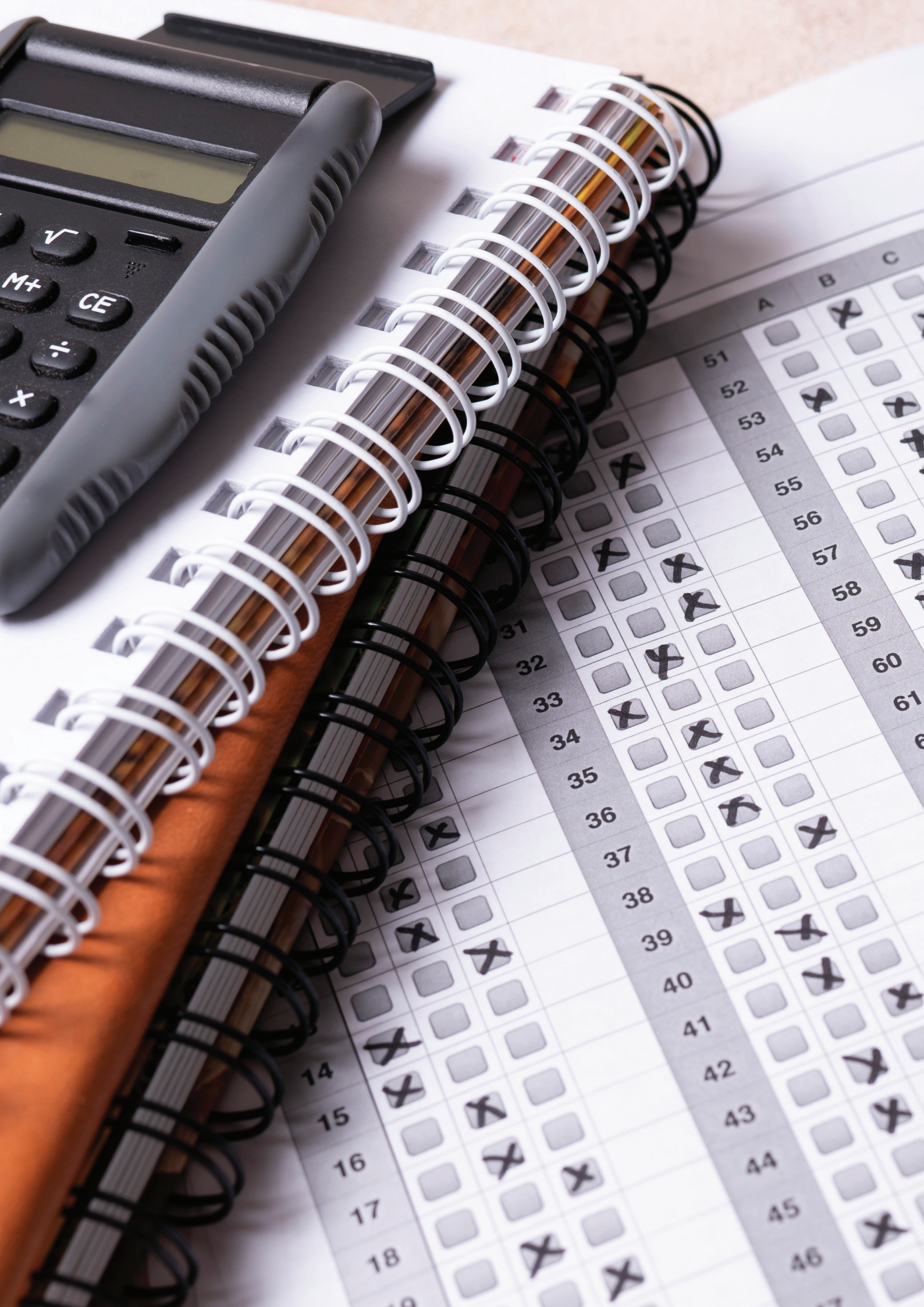
Activating Identities and Futures engages students to take greater ownership and agency over their learning as they select relevant strategies to explore, create and/or plan to progress an area of personal interest towards a learning output. Students develop the skills to 'learn how to learn' and strategies to 'know what to do when you don't know what to do'.

Students explore ideas related to an area of personal interest through a process of self-directed inquiry. They draw on knowledge, skills and capabilities developed throughout their education that they can apply in this new context and select relevant strategies to progress the learning to a resolution. The focus of the exploration aims to develop capabilities and support students in their chosen pathways.

School Assessment:	Assessment Type 1:	Folio – 35%
	Assessment Type 2:	Performance – 35%
External Assessment:	Assessment Type 3:	Reflection – 30%







	A	B	C
51		X	
52			
53		X	X
54			X
55			
56			
57			X
58			
59			
60			
61			
6			
31			
32		X	
33			
34	X		
35		X	
36		X	
37			X
38		X	
39		X	
40			X
41			
42			X
43			X
44			
45			X
46			
14	X		
15	X		
16		X	X
17			
18		X	X
19			

SUBJECT REFERENCE

AGRICULTURE

Agricultural Production.....	44
------------------------------	----

COMMUNITY STUDIES

Community Studies.....	45
------------------------	----

DESIGN & TECHNOLOGY

Food & Hospitality	46
Industry & Entrepreneurial Design Solutions – Metal	47
Material Solutions – Woodwork.....	48

ENGLISH

English.....	49
Essential English.....	50
English Literary Studies.....	51

OUTDOOR EDUCATION

Outdoor Education.....	52
------------------------	----

PHYSICAL EDUCATION

Physical Education	53
--------------------------	----

HUMANITIES & SOCIAL SCIENCES (HASS)

Modern History.....	54
---------------------	----

INTEGRATED LEARNING

Cambodia	55
----------------	----

MATHEMATICS

Essential Mathematics.....	56
General Mathematics.....	57
Mathematical Methods.....	58
Specialist Mathematics	59

SCIENCES

Biology.....	60
Chemistry.....	60
Physics.....	61
Psychology	61

THE ARTS

Creative Arts.....	62
Drama	63
Information Processing & Publishing (IPP)	64
Visual Arts – Art.....	65

AGRICULTURAL PRODUCTION

Duration of course: Full year

Recommended Understandings and Experiences: Stage 1 Agriculture

Course Overview:

Agricultural Production focuses on the techniques, procedures, and processes used in agricultural production and on developing an understanding of the relevant agricultural concepts. You will explore aspects of agricultural production that are important to Naracoorte and the South East.

Big Ideas: Providing the opportunity to learn about the future of food and fibre production while making industry connections and engaging with the community.

Key Questions:

- How do you effectively manage and handle sheep and cattle on small and large scales?
- What pest/disease management strategies can be used to prevent, control and ensure sustainable management of the pest in the future?
- Why are crop trials used and how can they be implemented effectively?
- How does technology enhance agriculture practices?

School Assessment:

Assessment Type 1: Agricultural Reports – 30%

Assessment Type 2: Applications – 40%

Assessment Type 3: Production Investigation (external) – 30%



COMMUNITY STUDIES

(DOES NOT GO TOWARDS AN ATAR. YOU MAY CHOOSE UP TO THREE DIFFERENT FOCUS COMMUNITY STUDIES AS PART OF THEIR SACE)

Duration of course: Full year: SACE Stage 2

Course Overview:

In Community Studies you can choose your own area of study to explore in depth. There are six different areas that can be chosen from. You will then find a Community Mentor to give you advice and feedback throughout their learning journey. You compile a folio of evidence demonstrating at least 120 hours of work for each Community Studies subject undertaken. You then undertake a presentation detailing your learning journey, and finally a 1000 word reflection is completed as the externally marked component of Community Studies.

Areas of study include:

- Arts and the Community
- Health and Recreation and the Community
- Work and the Community
- Science and Technology and the Community
- Foods and the Community
- Communications and the Community

* This subject cannot be used to generate an ATAR!

Big Ideas: You create your own pathway

Key Questions:

What do you want to complete an in-depth study of

- You create your own contract of learning
- You link with Community mentors to give you feedback throughout your journey
- You present your folio of evidence
- How you complete an overall reflection on your learning journey

School Assessment:	Community Studies:	20 SACE Stage 2 Credits
	Assessment Type 1:	Contract of work
External Assessment:	Assessment Type 2:	Reflection



FOOD & HOSPITALITY

Duration of course: Full year – 20 SACE credits

Recommended Understandings and Experiences:

It is preferred that you have completed Stage 1 Food and Hospitality.

Course Overview:

Stage 2 Food and Hospitality delves into the evolving and dynamic nature of the Food and Hospitality industry. Students will critically analyse contemporary and future issues impacting the industry, considering a range of factors including economic, environmental, legal, political, socio-cultural, and technological influences. These factors will be examined at local, national, and global levels, providing a comprehensive understanding of the industry's current and future landscape. This course prepares students to navigate and contribute to the Food and Hospitality sector with a well-rounded and informed perspective.

Big Ideas: 'Tapas' Identify and discuss the effects of Tapas restaurants on the food and hospitality industry of changing local and economic patterns and trends, in particular healthy eating trends.

Key Questions:

- How has the evolution of Spanish Tapas impacted sustainability, healthy choices, and economic patterns in South Australia?
- What are the key elements to traditional Tapas and how does a contemporary approach incorporate South Australian products?
- Is Tapas a fad or will this Mediterranean diet become a fusion of Australian food choices?

School Assessment:	Assessment Type 1:	Practical – 50%
	Assessment Type 2:	Group Activity – 20%
External Assessment:	Assessment Type 3:	Investigation – 30%



INDUSTRIAL OR ENTREPRENEURIAL DESIGN SOLUTIONS – METAL

Duration of course: Full year – 20 SACE credits

Recommended Understandings and Experiences: Desirable completion of Design and Technology Stage 1 or experiences in Year 9 and/or Year 10.

Course Overview:

Year 12 Metalwork gives you the opportunity to design, plan, construct and evaluate projects. You will learn how to use metal to fabricate these projects safely and accurately. You will develop your skills in preparation for the planning, designing and fabrication of your Major Project. Demonstrated understanding and analysis of the fabrication processes of the project is required. You will also be required to have a metal product with either an Industry or Entrepreneurial focus.

Big Ideas:

- Metalworking
- Sustainability and Ethical Understanding
- Safety
- Analysis and Design
- Project management
- Industry, or Entrepreneurial focus

Key Questions:

How will you:

- Use hand tools, power tools and fixed machinery safely and accurately?
- Fabricate and work metal to create projects?
- Prepare and finish metal projects?
- Understand sustainability and cost of materials associated with project fabrication?
- Use ICT, Numeracy and Literacy skills in the production of a Design Folio?
- Understand how to use multiple metal fabrication techniques?
- Understand how the fabrication and materials used affect the world over their lifespan?

School Assessment:	Assessment Type 1:	Specialised Skills Tasks – 20%
	Assessment Type 2:	Design Process and Product – 50%
External Assessment:	Assessment Type 3:	Resource Study – 30%

MATERIAL SOLUTIONS – WOODWORK

Duration of course: Full year – 20 SACE credits

Recommended Understandings and Experiences: Desirable completion of Design and Technology Stage 1 or experiences in Year 9 and/or Year 10. **Highly recommended to have completed a semester of Design and Technology at Stage 1.**

Course Overview:

Stage 2 Woodwork gives you the opportunity to design, plan, construct and evaluate projects. You learn how to use timber to construct these projects safely and accurately. You will develop your skills in preparation for planning, designing and constructing your Major Project. Analysis and demonstrated understanding of the design and construction processes of the Project is required.

Big Ideas:

- Woodworking
- Sustainability and Ethical Understanding
- Safety
- Analysis and Design
- Project management

Key Questions:

How will you:

- Use hand tools, power tools and fixed machinery safely and accurately?
- Construct and work timber to create projects?
- Prepare and finish timber projects?
- Understand sustainability and cost of materials associated with project construction?
- Use ICT, Numeracy and Literacy skills in the production of a Design Folio?
- Understand how to use multiple wood working joints?
- Understand how the construction and materials used effect the world over their lifespan?

School Assessment:	Assessment Type 1:	Specialised Skills Tasks – 20%
	Assessment Type 2:	Design Process and Product – 50%
External Assessment:	Assessment Type 3:	Resource Study – 30%

ENGLISH

Duration of course: Full year – 20 SACE credits

Recommended Understandings and Experiences: Successful completion of Stage 1 English

Course Overview:

In this course you will study a range of texts including novels, short stories, films and plays. Students produce analytical responses to these texts including essay, oral presentation and multi-modal texts. Students also produce three creative pieces for a range of audiences and purposes. These are accompanied by a writer's statement. You will also independently study two texts of your own choosing (subject to teacher approval) which explore similar ideas or themes. Your response to these texts will form your External Assessment, being a comparative essay.

Big Ideas: How can I manipulate language and structure to create meaning for my audience?

Key Questions:

- How does the context, audience and purpose of a text influence the way it is constructed?
- How can language be used to represent ideas and shape perspectives?
- What can looking at a text through a specific lens teach us about ourselves and the world in which we live?

School Assessment:

Three Responding to Texts tasks: 30%

Each task is approximately 1000 words and at least one must be in oral or multimodal form.

Three Creating Texts tasks and a Writer's statement: 40%

Each task is approximately 1000 words.

External Assessment: 30%

A comparison of two independently selected texts, maximum 2000 words.

ESSENTIAL ENGLISH

Duration of course: Full year – 20 SACE credits

Recommended Understandings and Experiences: Completion of Stage 1 Essential English

Course Overview:

In Stage 2 Essential English, you will read, analyse, create and respond to texts, including but not limited to films, documentaries, TED Talks, short stories, poetry and speeches in and for a range of personal, social, cultural, community and/or workplace contexts. Through undertaking this subject, you will be able to understand and interpret information, ideas and perspectives in texts and consider ways in which language choices are used to create meaning. Your responses will be in oral and written forms including essays, speeches, narratives and multi-modal presentations.

Big Ideas: How is language used for different purposes, in a range of contexts, to appeal to or engage a wide target audience?

Key Questions:

- How can I create texts to effectively communicate with those around me?
- How and why does the use of language features and conventions vary according to context, purpose and audience?
- How can creating and constructing texts help us to convey our attitudes, beliefs and/or views with those around us?
- How can analysing texts from authors from a range of backgrounds improve my understanding and engagement with those around me?

School Assessment:	Assessment Type 1:	Responding to Texts – 30%
	Assessment Type 2:	Creating Texts – 40%
	Assessment Type 3:	Language Study – 30%



ENGLISH LITERARY STUDIES

Duration of course: Full year – 20 SACE credits

Recommended Understandings and Experiences: B grade of higher completion of Stage 1 English

Course Overview:

Stage 2 English Literary Studies focuses on the skills and strategies of critical thinking needed to interpret texts. Through shared and individual study of texts, students encounter different opinions about texts, have opportunities to exchange and develop ideas, find evidence to support a personal view, learn to construct logical and convincing arguments, and consider a range of critical interpretations of texts. Students develop an understanding of the power of language to represent ideas, events, and people in particular ways and how texts challenge or support cultural perceptions.

Big Ideas: How do literary texts represent culture and identity while embracing the relationship between text, author, audiences, and contexts?

Key Questions:

- How can students establish critical arguments?
- What creative strategies can students adopt from authors in creating their own texts?
- How can evidence be used to develop, support and justify a critical interpretation of a text?

School Assessment:	Assessment Type 1:	Responding to Texts – 50%
	Assessment Type 2:	Creating Texts – 20%
External Assessment:	Assessment Type 3:	Text Study
		Part A: Comparative Text Study – 15%
		Part B: Critical Reading – 15%



OUTDOOR EDUCATION

Duration of course: Full year – 20 SACE credits

Recommended Understandings and Experiences: Completion of at least 1 Term of Stage 1 Outdoor Education

Camps may incur a charge.

Course Overview:

You will have the opportunity to immerse yourself in the outdoors, planning, running and evaluating multiple outdoor activities. You will conduct an in-depth investigation of an environmental issue, exploring its causes and possible solutions. Outdoor activities will be tailored to each cohort, but will often consist of Kayaking, Rock Climbing or Bushwalking. All aspects of planning and running a safe outdoor activity will be covered during this course.

Big Ideas: Learn about yourself and the environment, then seek ways to improve both?

Key Questions:

- What is required to safely plan and run an outdoor activity?
- What environmental issues are impacting South Australia and how can they be managed?
- How does outdoor recreation have an impact on natural environments?
- How can I improve my practical skills during outdoor activities?

School Assessment:	Assessment Type 1:	About Natural Environments (Revegetation project, Ecology of Naracoorte Creek) – 20%
	Assessment Type 2:	Experiences in Natural Environments (Planning, participation and reflection of Group activities and Self-Reliant Camp) – 50%
External Assessment:	Assessment Type 3:	Connections with Natural Environments (External Investigation of environmental issues) – 30%

PHYSICAL EDUCATION

Duration of course: Full year – 20 SACE credits

Recommended Understandings and Experiences: Successful completion of a Semester of Stage 1 PE or Stage 1 Integrated Learning Sports Studies.

Camps may incur a charge.

Course Overview:

Stage 2 Physical Education is where sport and science come together. Theory concepts are delivered through an integrated approach where opportunities are provided for you to undertake and learn through a wide range of authentic activity.

Areas of study include performance and participation improvement, skill analysis and assessment and understanding how and why we move. You will be expected to apply knowledge of movement concepts in physical activity and reflect and evaluate on performance improvement.

Big Ideas: Explore your own physical capacity and analyse human athletic performance.

Key Questions:

- How can you analyse and enhance your own and others performance outcomes?
- How do environmental and psychological factors affect performance outcomes?
- How can you use movement patterns in games to determine fitness components for success?
- Ever wondered why “great athletes make it look so easy”?

School Assessment:	Assessment Type 1:	Diagnostic Tasks (can include: biomechanics, skill acquisition and interplay of energy systems) – 30%
	Assessment Type 2:	Skill Improvement Analysis Task (in either physiological factors or skill development) – 40%
External Assessment:	Assessment Type 3:	Group Dynamics – 30%

You will not receive a grade for your practical performance.

MODERN HISTORY

Duration of course: Full year

Recommended Understandings and Experiences: Satisfactory completion of Stage 1 Modern History, Stage 1 Ancient Studies or Stage 1 Society and Culture.

Course Overview:

In Stage 2 Modern History you will investigate how dictators, depression and war influenced Germany and Europe. By exploring conflicting politics, you will discover how societies were shaped in the 20th Century. You will build skills of historical inquiry through drawing conclusions and analysing primary and secondary sources. You will develop your own historical argument exploring interpretations from historians. Your responses will be in written form including essays, reports, source analysis and an exam.

Big Ideas: Why did the world change so quickly in 50 years?

Key Questions:

- Why did extremist ideas become governments?
- How did nations forge independence?
- Why did the world stand by and watch humanity fall around them?
- How could two nations hold so much power in the world?

School Assessment:	Assessment Type 1:	Historical Skills – 50% Five tasks, 1000 words each.
	Assessment Type 2:	Historical Study – 20% Development of historical argument, 2000 words.
External Assessment:	Assessment Type 3:	Examination – 30% 130 minute exam divided into an essay and a source analysis.

.....

INTEGRATED LEARNING – CAMBODIA

OFFERED BI-ANNUALLY

Duration of course: Full year – 20 SACE Credits

Course fee: Travel to Cambodia – approx. \$5,000 pp.
(Subject to minimum numbers required for international travel being met.)

Course Overview:

Head Heart Hand Holiday is a Stage 2 Integrated Learning subject in which you must achieve a C- or better to count towards their SACE. It can also count towards and ATAR.

Have you ever wanted to travel to Cambodia? Are you interested in finding out about a third world country and participating in life saving volunteer work? If you are interested in connecting with another culture, then this subject may be for you. You will explore the requirements to travel to Cambodia in the generation of a Planning Portfolio and then participate in numerous, often out of school hours, fundraising activities to support your travel. You will need to undertake an Investigation around travelling to a Third World Country, Cambodia or Volunteering. A photographic journal is required of the journey as well as participation in a hands on task undertaken in Cambodia that interacts with a local family. As part of this subject you will also explore your own unique gifts you bring to the world and undertake a self-development program of Tribe!

Big Ideas: Volunteering in a third world country. Undertaking a personal self-development program.

Key Questions:

- How can I give back to society?
- How to organise large scale fundraising events?
- How can I share my findings with others?
- How can I apply my learning beyond the classroom?
- How can I travel internationally?
- What can I learn about myself?
- Learning about Cambodia.

School Assessment:	Assessment Type 1:	Practical Inquiry (40%) 3 tasks in total
	Assessment Type 2:	Connections (30%) 2 tasks in total
	Assessment Type 3:	Personal Endeavour (30%) 1 task in total

Students working towards an ATAR can only choose one Integrated Learning subject.

ESSENTIAL MATHEMATICS

Duration of course: Full year – 20 SACE Credits

Course Overview:

Essential Mathematics offers you the opportunity to extend your mathematical skills in ways that apply to practical problem-solving in everyday and workplace contexts. You will apply your mathematics to diverse settings, including everyday calculations, financial management, business applications, measurement and geometry and statistics in social contexts.

Big Ideas: Developing your computational skills and expanding your ability to apply your mathematical skills in flexible and resourceful ways.

Key Questions:

- What financial mathematics needs to be considered when purchasing a car or running a business?
- How can correlation be used to determine if evidence of a causal link exists between two variables?
- What measurement applications are used to determine features of 2 and 3 dimensional shapes?

School Assessment:	Assessment Type 1:	Skills and Applications Tasks – 40%
	Assessment Type 2:	Investigation Folio – 30%
External Assessment:	Assessment Type 3:	External Assessment (exam) – 30%



GENERAL MATHEMATICS

Duration of course: Full year – 20 SACE Credits

Recommended Understandings and Experiences: Stage 1 General Mathematics or Mathematics.

Course Overview:

A problem-based approach is integral to the development of mathematical models and the associated key concepts in the topics. Topics cover a diverse range of applications of Mathematics, including personal financial management, the statistical investigation process, modelling using linear and non-linear functions and discrete modelling using networks and matrices.

Successful completion of General Mathematics at Stage 2 prepares you for entry to tertiary courses requiring a non-specialised background in Mathematics.

Big Ideas: Modelling the world around you mathematically.

Key Questions:

- How are linear relationships used to model everyday situations?
- How are matrices used to examine the efficiency or reliability of a network system or future trends are predicted in situations.
- How is normal distribution used to predict social, industrial and scientific contexts.
- What financial applications do you need to use to make regular deposits, repay a loan or make lump-sum investments?

School Assessment:	Assessment Type 1:	Skills and Applications Tasks – 40%
	Assessment Type 2:	Investigation Folio – 30%
External Assessment:	Assessment Type 3:	External Assessment (exam) – 30%



MATHEMATICAL METHODS

Duration of course: Full year – 20 SACE Credits

Recommended Understandings and Experiences:

Stage 1 Mathematics or Stage 1 Specialist Mathematics.

Course Overview:

Mathematical Methods develops an increasingly complex and sophisticated understanding of calculus and statistics. By using functions and their derivatives and integrals and by mathematically modelling physical processes, you will develop a deep understanding of the physical world through a sound knowledge of relationships involving rates of change.

Big Ideas: Creating pathways into studying mathematics based subjects (health and social science, engineering, physics) at University.

Key Questions:

- Why is calculus essential for developing an understanding of the physical world?
- How and why are statistical decisions made?

School Assessment:	Assessment Type 1:	Skills and Applications Tasks – 50%
	Assessment Type 2:	Investigation Folio – 20%
External Assessment:	Assessment Type 3:	External Assessment (exam) – 30%



STAGE 2 | MATHEMATICS

Stage 1 Mathematics and Stage 1 Specialist Mathematics.

Specialist Mathematics draws on and deepens students' mathematical knowledge, skills, and understanding, and provides opportunities for students to develop their skills in using rigorous mathematical arguments and proofs, and using mathematical models. It includes the study of functions, calculus, vectors and complex numbers.

The subject leads to study in a range of tertiary courses such as mathematical sciences, engineering, computer science, and physical sciences. Students envisaging careers in related fields will benefit from studying this subject.

Specialist Mathematics is designed to be studied in conjunction with Mathematical Methods.

Key Questions:

- How can the ideas from Stage 2 Mathematical Methods be extended to more complex functions and contexts?
- How can functions, calculus, vectors and complex numbers be used to model real world contexts?

Assessment Type 2: Investigation Task – 20%

External Assessment: **Assessment Type 3:** External Assessment (exam) – 30%

BIOLOGY

Duration of course: Full year – 20 SACE Credits

Recommended Understandings and Experiences: Stage 1 Biology

Course Overview:

Your study of Biology leads you to discover how DNA and cells support the basic functions of life. You will investigate how the body maintains equilibrium. You will discover the origin of life on earth and the process of evolution.

Big Ideas: Studying life from the smallest molecules to the large scale interactions of living systems.

Key Questions:

- Why is heredity an important biological principle?
- How are cells the basic unit for life?
- What systems and responses have humans developed for survival?
- How do species evolve over time?

School Assessment:	Assessment Type 1:	Skills & Applications Tasks – 40%
	Assessment Type 2:	Investigation Folio – 30%
External Assessment:	Assessment Type 3:	Online Exam – 30%

CHEMISTRY

Duration of course: Full year – 20 SACE Credits

Recommended Understandings and Experiences: Stage 1 Chemistry

Course Overview:

You will develop and extend your understanding of how the physical world is chemically constructed, the interaction between human activities and the environment and the use that human beings make of the planet's resources. You will explore examples of how scientific understanding is dynamic and develops with new evidence, which may involve the application of new technologies.

Big Ideas: Our world is chemically constructed by the interactions between human activities and the environment.

Key Questions:

- How do humans use (and abuse) our planet's resources to benefit themselves economically?
- How can you manipulate chemical reactions to obtain a more profitable outcome?
- How does Chemistry form the backbone of pharmaceuticals and genetic engineering?

School Assessment:	Assessment Type 1:	Skills and Applications Tasks – 40%
	Assessment Type 2:	Investigation Folio – 30%
External Assessment:	Assessment Type 3:	External Assessment (exam) – 30%

PHYSICS

Duration of course: Full year – 20 SACE Credits

Recommended Understandings and Experiences: Stage 1 Physics

Course Overview:

Follow your Stage 1 physics with a deeper dive into more advanced physics. We start off by taking linear forces and motion into 2D and 3D situations by generalising with trigonometry. And then get almost to the speed of light with General Relativity. Next, we extend our understanding of electricity and waves with electromagnetism by exploring electric motors and generators. Finally, we dive into the very small with the Standard Model of particle physics. Explore the fundamental nature of material with nuclear reactions and what makes up the smallest building blocks of the world around us.

Big Ideas: Applying Physics concepts to real life phenomena.

Key Questions:

- What is the relationship between matter and energy at high speeds?
- Why do magnetic fields behave in particular ways?
- How can light and matter exhibit the characteristics of both waves and matter?

School Assessment:	Assessment Type 1:	Skills and Applications Tasks – 40%
	Assessment Type 2:	Investigation Folio – 30%
External Assessment:	Assessment Type 3:	External Assessment (exam) – 30%

PSYCHOLOGY

Duration of course: Full year – 20 SACE Credits

Recommended Understandings and Experiences: Stage 1 Psychology

Course Overview:

This course focuses on the construction of psychology as a scientific enterprise. Psychology is based on evidence gathered from scientific studies using observation, experimentation and experience. Psychology aims to describe and explain both the universality of the human experience. Students will explore the influences that society and organisations place on the individual and how these affect mental health. They will focus their learning under the Biopsychosocial approach learning how this approach is applied to psychology.

Big Ideas: Understanding human behaviour is something that fascinates people world wide, we want to know why people act and react in certain ways.

Key Questions:

- How can we maintain our wellbeing in the face of multiple challenges?
- What impacts do organisations have on staff performance?
- What societal influences cause changes in our behaviour?

School Assessment:	Assessment Type 1:	Investigations Folio – 30%
	Assessment Type 2:	Skills and Application Tasks – 40%
External Assessment:	Assessment Type 3:	External Examination – 30%

CREATIVE ARTS

Duration of course: Full year – 20 SACE credits

Recommended Understandings and Experiences:

Successful completion of Stage 1 Visual Arts or Creative Arts.

Course Overview:

Ever wanted to create that something special? Well, this is your opportunity. Creative Arts provides you with the techniques, materials and tools to create basically anything. In previous years most students have focused on traditional painting and drawing, however, you can choose, jewellery making, sculpture, textiles, woodwork, metal work, graphic design, concept art and more. The great thing is, this course is not limited to that, your imagination is the limit. You should focus on investigating what and how you plan to go about your creation, use creative arts techniques and tools to develop it. Produce your product in a real-life setting and then reflect and critically analyse the whole process and product.

Big Ideas: Use your imagination and get creative!

Key Questions:

- What employment opportunities and roles exist within different arts disciplines?
- How can I develop the skills necessary to be successful in my chosen arts field?
- How can I use my creative skills to produce a final work to be exhibited, sold, or performed?

School Assessment: **Assessment Type 1:** Product – 50%

Assessment Type 2: Inquiry – 20%

External Assessment: **Assessment Type 3:** Practical Skills – 30%



DRAMA

Duration of course: Full year – 20 SACE credits

Recommended Understandings and Experiences:

Successful completion of Stage 1 Drama Course is recommended but not required.

Course Overview:

Do you want to form life long memories and create something unique? Then this is the subject for you! This subject provides you with flexibility where your imagination is the limit. Creative Arts provides you with the opportunity to be inspired and develop your knowledge and understanding of the Arts industry. In this subject you focus on investigating how to bring a play alive, participate in the dramatic process and critically analyse, evaluate and reflect on the journey you undertook as a developing artist. You will also have the opportunity to apply the skills you have learnt to your own creation and demonstrate your knowledge and understanding of theatrical components in an evaluation of workshops and theatre experiences.

* Please note you need to be available for after school rehearsals to complete the group production task.

Big Ideas: Lights up! Let's get creative!

Key Questions:

- How can my creativity shape future opportunities?
- How can I work collaboratively with others to contribute to performing arts events?
- How can I further develop my skills to prepare me for life after school?

School Assessment:	Assessment Type 1:	Group Production – 40%
	Assessment Type 2:	Evaluation and Creativity – 30%
External Assessment:	Assessment Type 3:	Creative Presentation – 30%



INFORMATION PROCESSING & PUBLISHING (IPP)

Duration of course: Full year – 20 SACE credits

Recommended Understandings and Experiences:

Successful completion of at least one Semester of Visual Arts or IPP at Stage 1 level.

Course Overview:

Look around you. Design is everywhere – from your morning cereal box to a music festival poster to the process of ordering food at McDonald's, you wouldn't be looking at this information right now if it wasn't for the elements of graphic design. In IPP, you will develop your understanding of design principles and practical skills in graphic design programs including Adobe Illustrator, InDesign, Photoshop and Dreamweaver. You will apply these skills to develop print media and web design products to effectively communicate information in a visually appealing manner. So if you have ever wanted to design your own logo or change the design of a poster, or learn how to design your own website, then this course is for you!

Big Ideas: There are three responses to a piece of design, yes, no and wow! Wow is the one to aim for.

Key Questions:

- How do I effectively use the design principles to design and create 'wow' factor logos, imagery and text for local businesses?
- How can I use industry-level software to produce, edit and manipulate images and text for use in digital designs?
- What are the key components of a good design? and how do I evaluate the success of my products?
- How is the graphic design industry being affected by social and ethical laws?

School Assessment: **Assessment Type 1:** Practical Skills – 40%

Assessment Type 2: Issues Analysis – 30%

External Assessment: **Assessment Type 3:** Product and Documentation – 30%



VISUAL ARTS – ART

Duration of course: Full year – 20 SACE credits

Recommended Understandings and Experiences: Successful completion of at least one Semester of Visual Arts or Creative Arts at Stage 1.

Course Overview:

In Stage 2 Visual Arts you will plan and create works of art which reflect their individual ideas and distinctive visual style. You motivate your own learning, selecting topics and themes that have personal relevance. You will research artists and analyse and interpret artworks related to your practical work to inspire you to become better artists. Widespread experimentation will be undertaken with selected materials and techniques to refine practical skills and document your learning and problem-solving processes. A variety of materials and techniques will be used to create original, resolved works of art.

Big Ideas: The Artist in me

Key Questions:

- What sort of artist do I want to be?
- How can I further develop my knowledge and skills to become a better artist?
- How can I apply my own unique ideas and skills to create original and meaningful works of art?

School Assessment:	Assessment Type 1:	Folio – 40%
	Assessment Type 2:	Practical – 30%
External Assessment:	Assessment Type 3:	Visual Study – 30%







Naracoorte High School

Stewart Terrace, Naracoorte
South Australia 5271

P: 08 8762 1333 **E:** dl.0786.info@schools.sa.edu.au

www.narahs.sa.edu.au  



Government of South Australia
Department for Education

CRICOS Name: Department for Education | **CRICOS Number** 00018A