

2023 annual report to the Community

Naracoorte High School

Naracoorte High School number: 786

Partnership: Wrattontully



School principal:

Lynette Corletto

Date of endorsement:

06/03/2024



Context Statement

Naracoorte High School caters for students from 7-12. At the time of this report, the enrolment in 2023 is 435. Naracoorte High School is classified as Category 4 on the Department for Education Index of Educational Disadvantage. At the time of this report, the school population includes 3% Aboriginal students, 15% students with disabilities, 6% students with English as an additional language or dialect (EALD) funded background. Further information about the school is available on the school's website (including its context statement), as well as the My School website.

Governing Council Report

Beginning with genuine appreciation, I want to thank all the staff and students for their exceptional hard work. Our school is a dynamic environment with various additional tasks and numerous responsibilities.

As we reach the end of another school year, it's a time to reflect on our collective journey. The dedication of our educators, the support from parents, and the commitment of our talented students have all contributed to creating a positive and thriving school environment.

Regrettably, as the year draws to a close, it is time to bid farewell to another cohort of graduating students and some of our dedicated staff. We extend our heartfelt thanks to each of you for your time at Naracoorte High and wish you the utmost success in your future endeavours.

Special acknowledgment is extended to students who have represented our school admirably in academics, athletics, creativity, and extracurricular pursuits. Congratulations on your outstanding achievements.

I would also like to thank Tammy Schinckel for her tremendous effort in facilitating the Cambodia trip for 12 students as part of their year 12 integrated learning subject. —special thanks to John Flint and Charlene Grant for accompanying them and providing supervision.

This year, our school became part of the new metrics initiative, which brings an exciting dimension to education.

The external review has yielded positive feedback, indicating that our school is on a path to success, particularly in fostering a more positive and supportive staff culture.

The establishment of a fundraising subcommittee by the Governing Council, led by Bel Beggs, Kelly Pope, Sueanne Brodie, and Simone Mueller, achieved remarkable success in its first year. The Father's Day online auction raised \$5000 thanks to the generosity of over 45 businesses and individuals. Thank you also to everyone who bid on these items. We eagerly anticipate exciting projects over the next few years.

A notable highlight is the relentless work of the building and grounds committee, which has developed a master plan and initiated the development of the Music Room.

Congratulations to Ginny Harvie who was awarded the Volunteering Award for outstanding service to Naracoorte High School. Ginny has been a valued member of Naracoorte High School Governing Council. She has been chair of the High School Canteen Sub Committee and has undertaken a huge amount of work to get the High School Canteen set up to be in a financially sustainable position moving into 2024, volunteering much of her time to back fill when staff required time off. Ginny is a great advocate for Naracoorte High School and continually promotes the good work that is undertaken at our site. To those interested in shaping your child's school environment, I strongly encourage your involvement. Whether on the main committee or one of the sub-committees — Buildings and Grounds, Fundraising, Finance, Ag, Canteen, etc. — your input is invaluable.

Thank you to Lynette, the staff representatives Bel and Emma and the current Governing Council committee for your support and to everyone else who has contributed.

Congratulations to the incredible team at NHS on another remarkable year. On behalf of the Governing Council, we wish everyone a safe and joyous Christmas, eagerly anticipating the year ahead.

Thank you

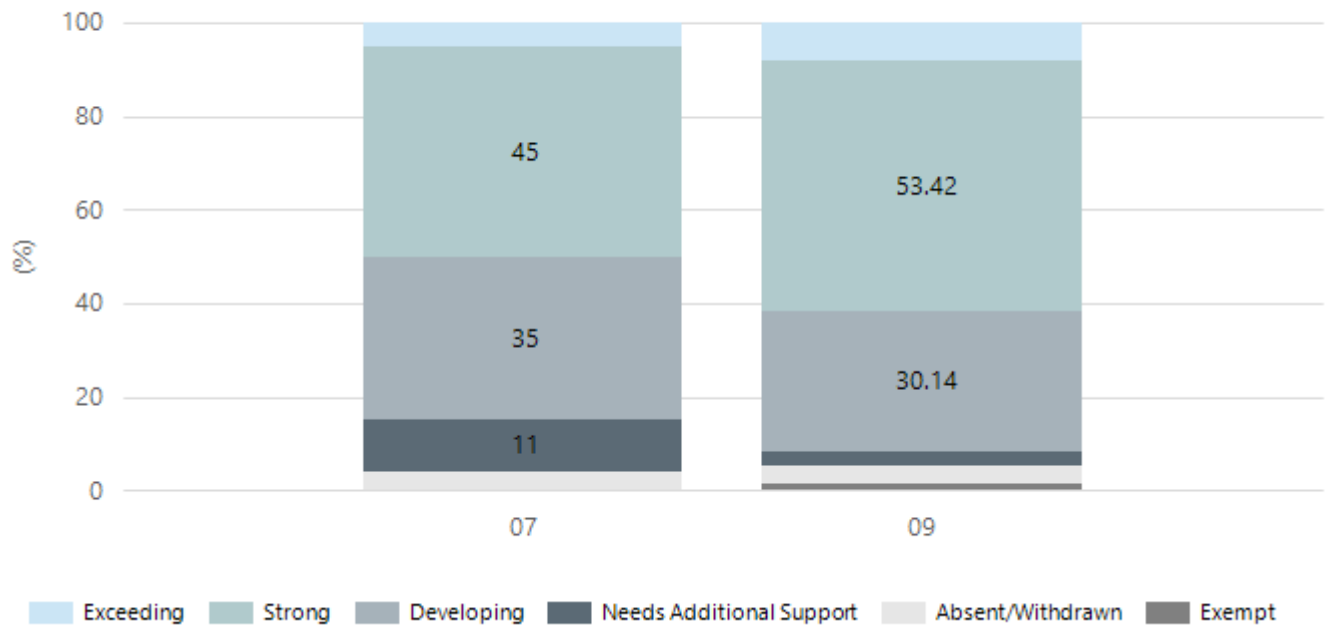
Liz Schroder
Governing Council Chairperson

Performance Summary

NAPLAN Proficiency

In 2023, the Australian Curriculum, Assessment and Reporting Authority (ACARA) - a Commonwealth Independent statutory authority - announced changes to NAPLAN performance reporting. This new way of reporting by ACARA that NAPLAN results from 2023 will not be comparable to previous years. The new approach replaces the previous numerical NAPLAN bands and the national minimum standard.

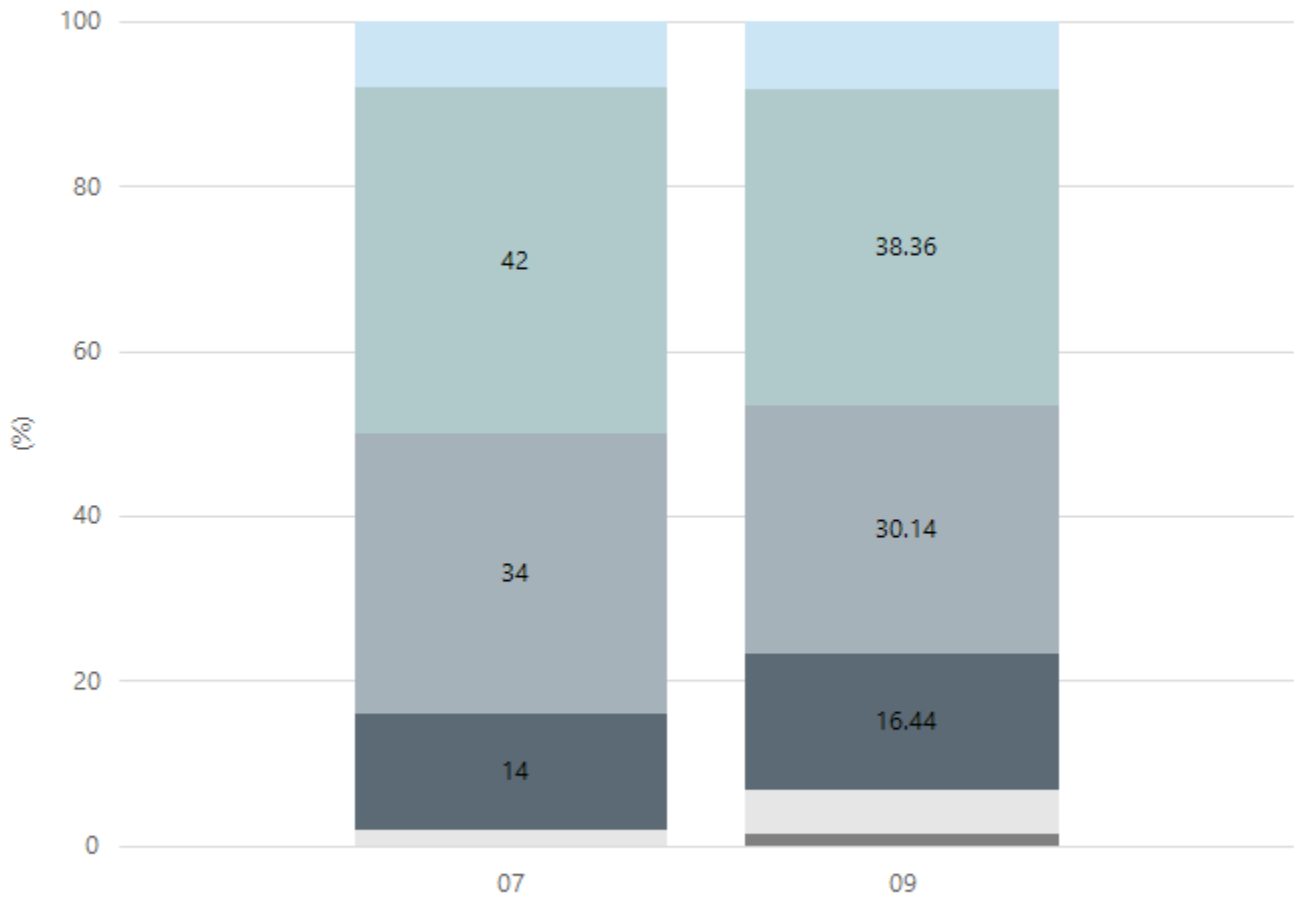
Numeracy



Year Level	07	09
Exceeding	5	6
Strong	45	39
Developing	35	22
Needs Additional Support	11	2
Absent/Withdrawn	4	3
Exempt		1
Total	100	73

Data Source: Department for Education Assessment Data Holdings, 2023. When there are less than six students in a cohort, no data is supplied.

Reading

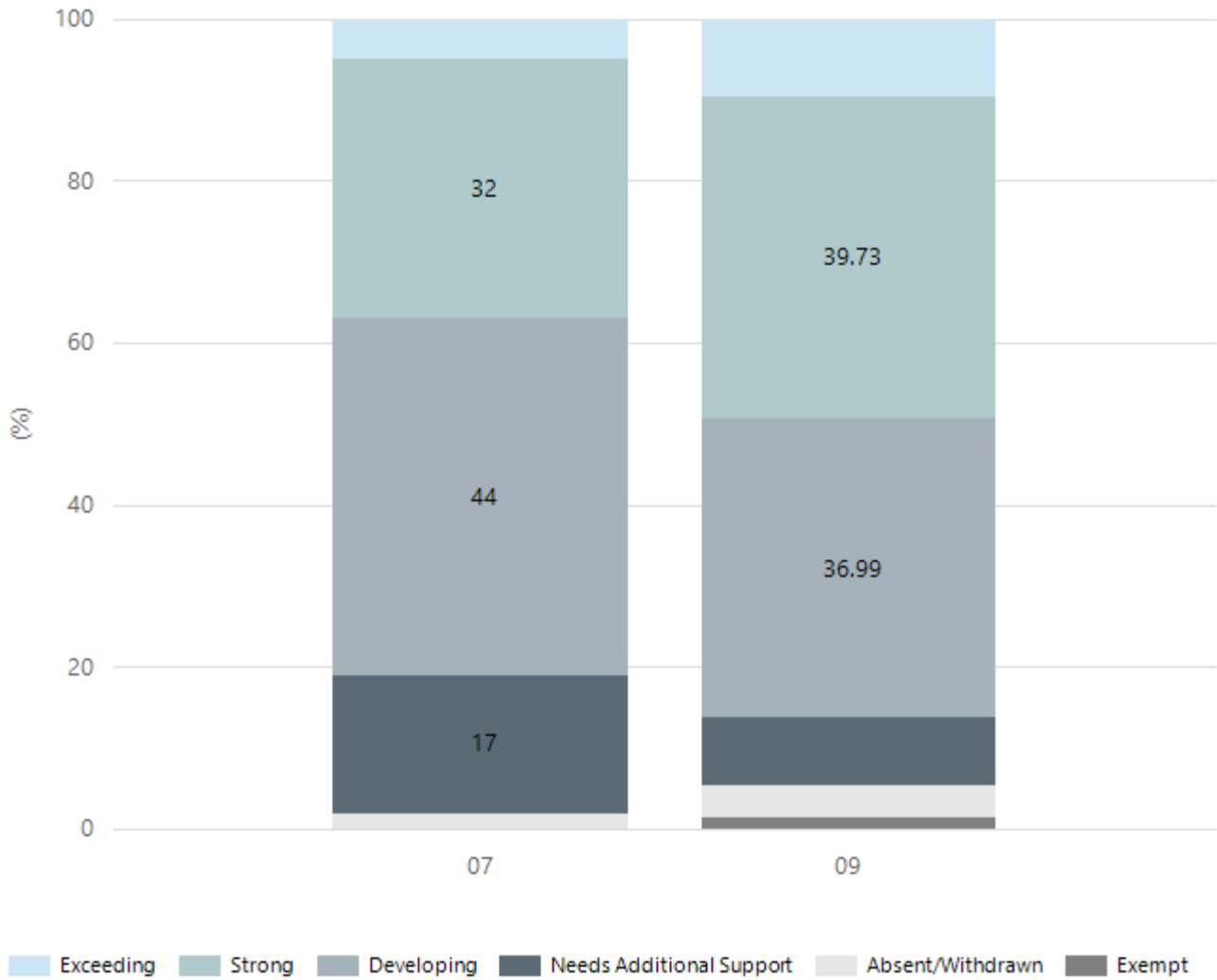


Exceeding Strong Developing Needs Additional Support Absent/Withdrawn Exempt

Year Level	07	09
Exceeding	8	6
Strong	42	28
Developing	34	22
Needs Additional Support	14	12
Absent/Withdrawn	2	4
Exempt		1
Total	100	73

Data Source: Department for Education Assessment Data Holdings, 2023. When there are less than six students in a cohort, no data is supplied.

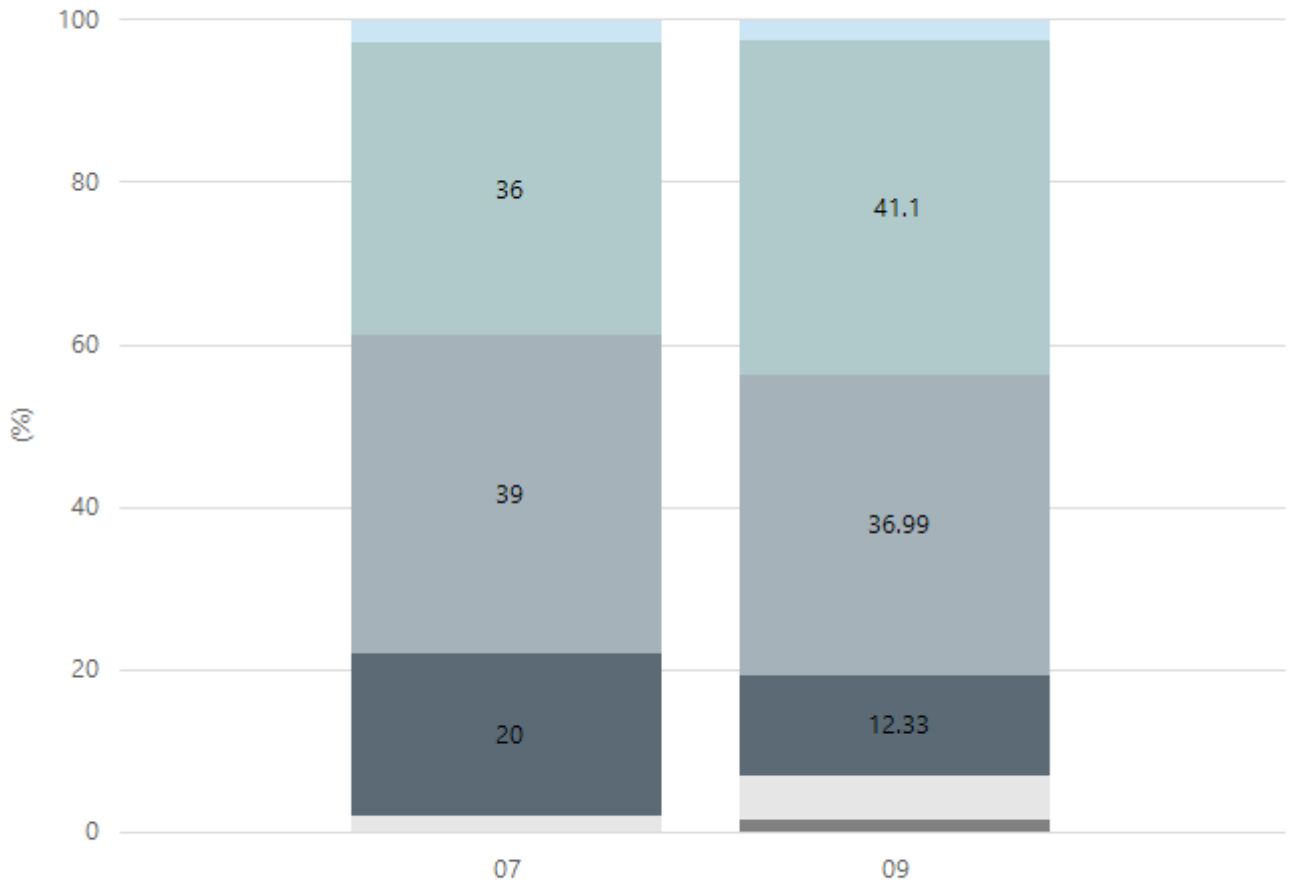
Writing



Year Level	07	09
Exceeding	5	7
Strong	32	29
Developing	44	27
Needs Additional Support	17	6
Absent/Withdrawn	2	3
Exempt		1
Total	100	73

Data Source: Department for Education Assessment Data Holdings, 2023. When there are less than six students in a cohort, no data is supplied.

Grammar

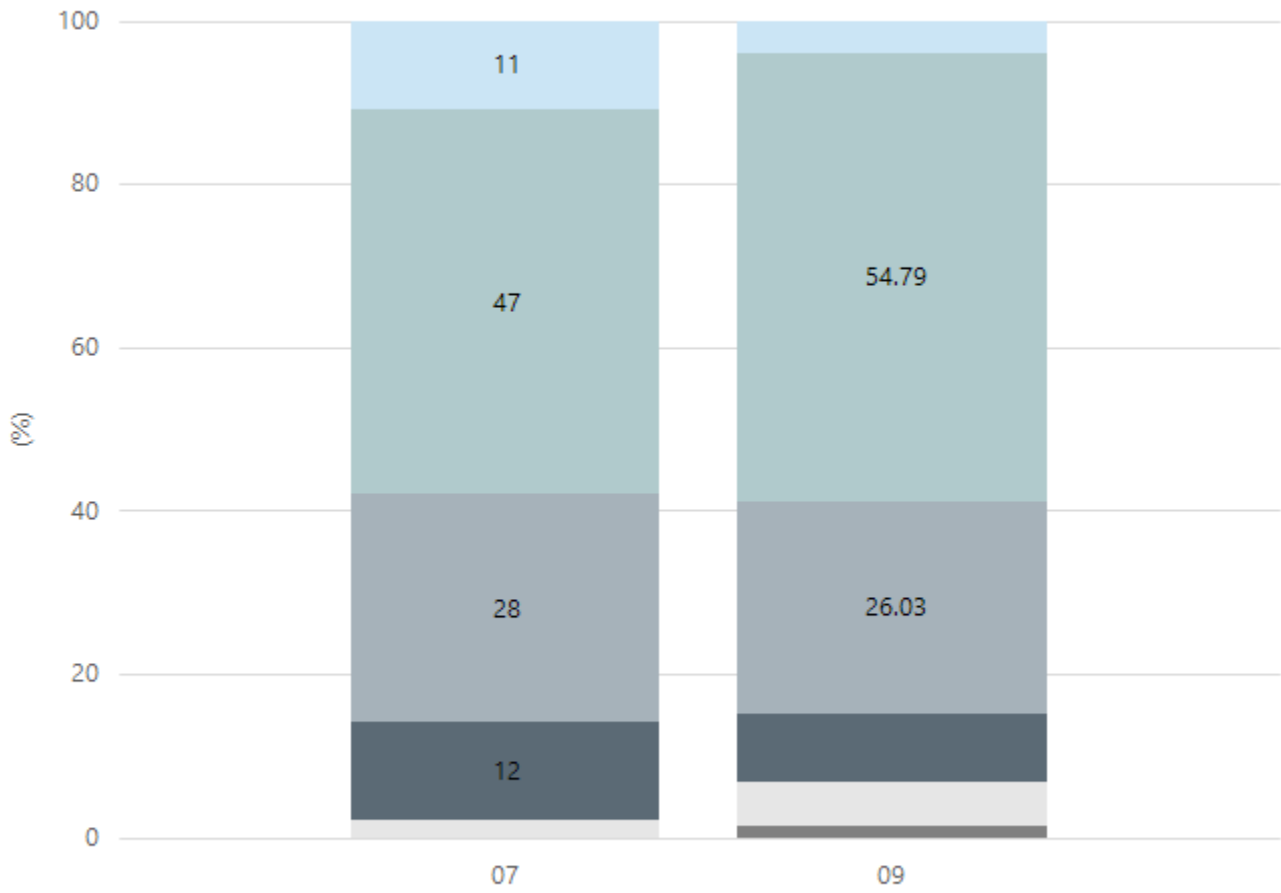


Exceeding Strong Developing Needs Additional Support Absent/Withdrawn Exempt

Year Level	07	09
Exceeding	3	2
Strong	36	30
Developing	39	27
Needs Additional Support	20	9
Absent/Withdrawn	2	4
Exempt		1
Total	100	73

Data Source: Department for Education Assessment Data Holdings, 2023. When there are less than six students in a cohort, no data is supplied.

Spelling



Exceeding Strong Developing Needs Additional Support Absent/Withdrawn Exempt

Year Level	07	09
Exceeding	11	3
Strong	47	40
Developing	28	19
Needs Additional Support	12	6
Absent/Withdrawn	2	4
Exempt		1
Total	100	73

Data Source: Department for Education Assessment Data Holdings, 2023. When there are less than six students in a cohort, no data is supplied.

South Australian Certificate of Education - SACE

SACE Stage 2 Grades - Percentage of grades that are C- or above for attempted SACE subjects (SEA)

2020	2021	2022	2023
98%	99%	96%	99%

Data Source: SACE School Data Reports, as of February 2023 for 2020-2022. 2023 SACE results are School supplied data. When there are less than six students, no data is supplied. Due to rounding of percentages, total results may not add up to 100%.

SACE Stage 2 Grade Distribution

Grade	2020	2021	2022	2023
A+	3%	2%		1%
A	14%	9%	5%	6%
A-	13%	11%	9%	10%
B+	9%	9%	12%	10%
B	18%	5%	10%	16%
B-	12%	16%	14%	15%
C+	13%	17%	20%	22%
C	10%	27%	20%	15%
C-	5%	4%	5%	3%
D+		1%	2%	1%
D	1%		1%	
D-	1%		1%	
E+	1%			

Data Source: SACE School Data Reports, as of February 2023 for 2020-2022. 2023 SACE results are School supplied data. When there are less than six students, no data is supplied. Due to rounding of percentages, total results may not add up to 100%.

SACE Completion - Percentage of completers out of those students who had the potential to complete their SACE in October that year

2020	2021	2022	2023
100%	100%	95%	96%

Data Source: SACE School Data Reports, as of February 2023 for 2020-2022. 2023 SACE results are School supplied data. When there are less than six students, no data is supplied. Due to rounding of percentages, total results may not add up to 100%.

Year 12 Students undertaking Vocational or Trade Training (VET)

	2021	2022	2023
Percentage of Year 12 students undertaking Vocational Training or Trade Training	39%	27%	44%
Percentage of Year 12 students attaining a Year 12 certificate or equivalent VET qualification	28%	11%	16%

Data Source: School supplied data

School Attendance

Year Level	2021	2022	2023
Year 07		89.9%	88.1%
Year 08	88.4%	88.3%	86.7%
Year 09	91.4%	81.3%	88.2%
Year 10	87.5%	85.0%	83.7%
Year 11	82.2%	73.0%	85.4%
Year 12	87.1%	83.2%	82.8%
Total	87.8%	83.9%	86.3%

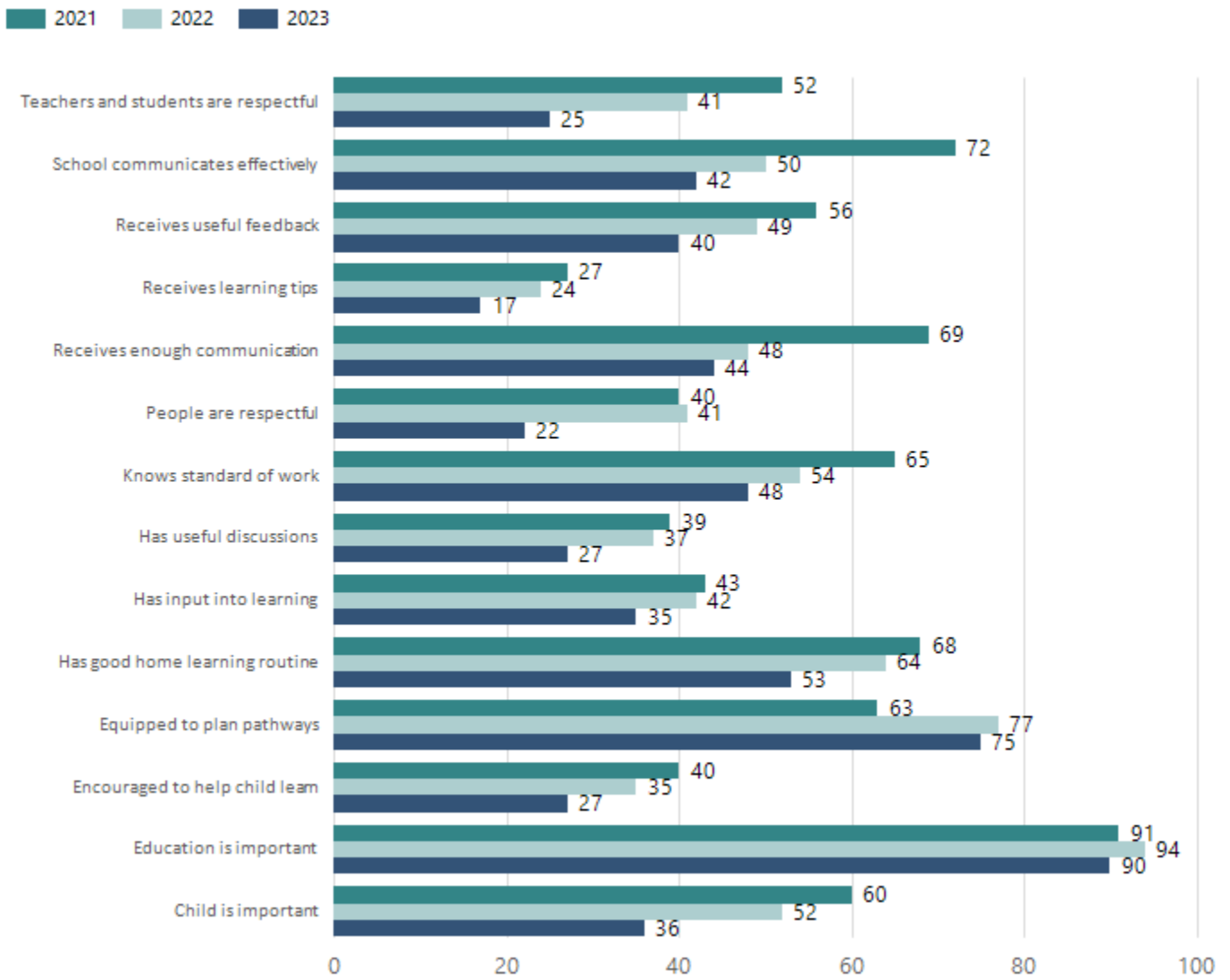
Data Source: Department for Education Attendance Data, Semester 1 Report 2023. A blank cell indicates there were no students enrolled. 'Primary Other' includes students enrolled in specialised education options. 'Secondary Other' includes students who have already spent a year at Year 12 and elected to undertake further study at Year 12.

Attendance Comment

In South Australia, all children and young people must be in school from 6 years to 16 years old. They must attend a government or non-government school full time. From age 16 to 17 however, young people must attend school or an approved learning program (such as an apprenticeship, traineeship, accredited course or university). Schools and parents must encourage and support students to come to school every day. Parents and caregivers must make sure their child is enrolled in a school, and attends school all day and everyday it is open, unless a child is sick or has an approved exemption. Teachers and leaders actively follow up when a student misses school, including recording all absences and non-attendance. All schools in South Australia have local attendance procedures governed under the Education and Children's Services Regulations 2020.

Parent Opinion Survey Results

Proportion of agree/strongly agree response(%)



Data Source: 2023 Department for Education Parent Opinions Survey, Term 3 2023.

Intended Destination

Leave Reason	Number	%
NG - ATTENDING NON-GOV SCHOOL IN SA	6	18.0%
NS - LEFT SA FOR NSW	3	9.0%
PE - PAID EMPLOYMENT IN SA	5	15.0%
SM - SEEKING EMPLOYMENT IN SA	2	6.0%
TG - TRANSFERRED TO SA GOVERNMENT SCHOOL	10	29.0%
U - UNKNOWN	6	18.0%

Data Source: Department for Education Destination Data Report, 2023. Data extract term 3 2023. Data shows recorded destinations for students that left the school in the previous year. Data is uploaded by schools in term 3 and may not reflect final or total figures at time of report creation.

Highest Qualifications held by the teaching workforce and workforce composition

All teachers at this school are qualified and registered with the SA Teachers Registration Board.

Qualification Level	Number of Qualifications
Bachelor's degrees or Diplomas	20
Postgraduate Qualifications	16

Data Source: Data extracted from Mandatory Workforce Information Collections as on the last pay date of June 2023. As self-reported by staff in the system.

Please note: Data includes staff who are Actively employed and on extended paid leave. Please note only the highest qualification of the Teaching staff is reported. Excludes any number of other certifications earned.

Workforce composition including indigenous staff

	Teaching Staff		Non-Teaching Staff	
	Indigenous	Non-Indigenous	Indigenous	Non-Indigenous
Full-Time Equivalents	1.0	34.2	1.0	16.6
Persons	1.0	37.0	1.0	22.0

Data Source: Data extracted from Mandatory Workforce Information Collection as on the last pay date of June 2023.

Please note: Data includes staff who are actively employed and on extended paid leave. "Indigenous category" is self-reported by staff in the system.

Financial Statement

Funding Source	Amount
Grants: State	\$37,676
Grants: Commonwealth	\$20,000
Parent Contributions	\$127,414
Fund Raising	\$5,631
Other	\$233,083

Data Source: School supplied data.